

Section G17

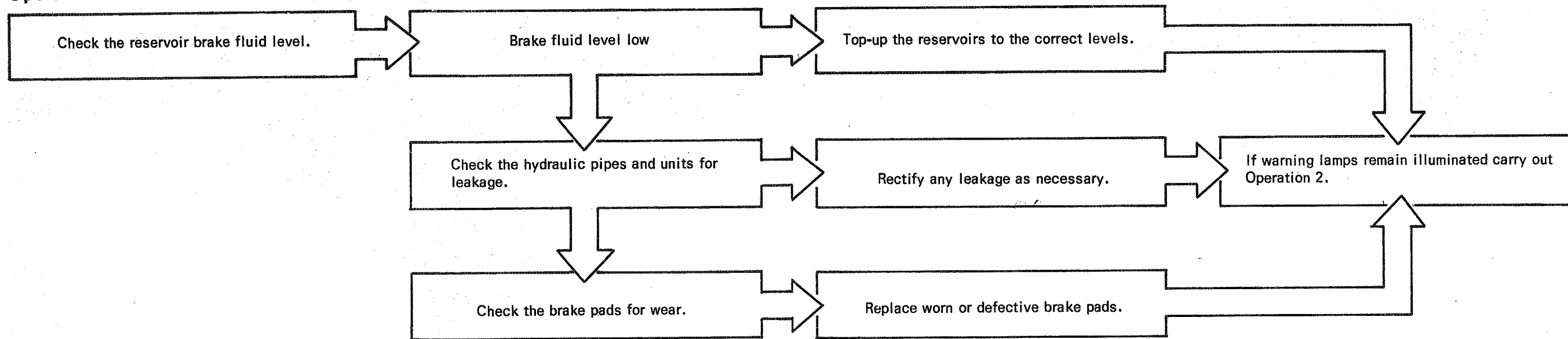
**Brake and height control  
hydraulic systems**

Systematic check sequence chart

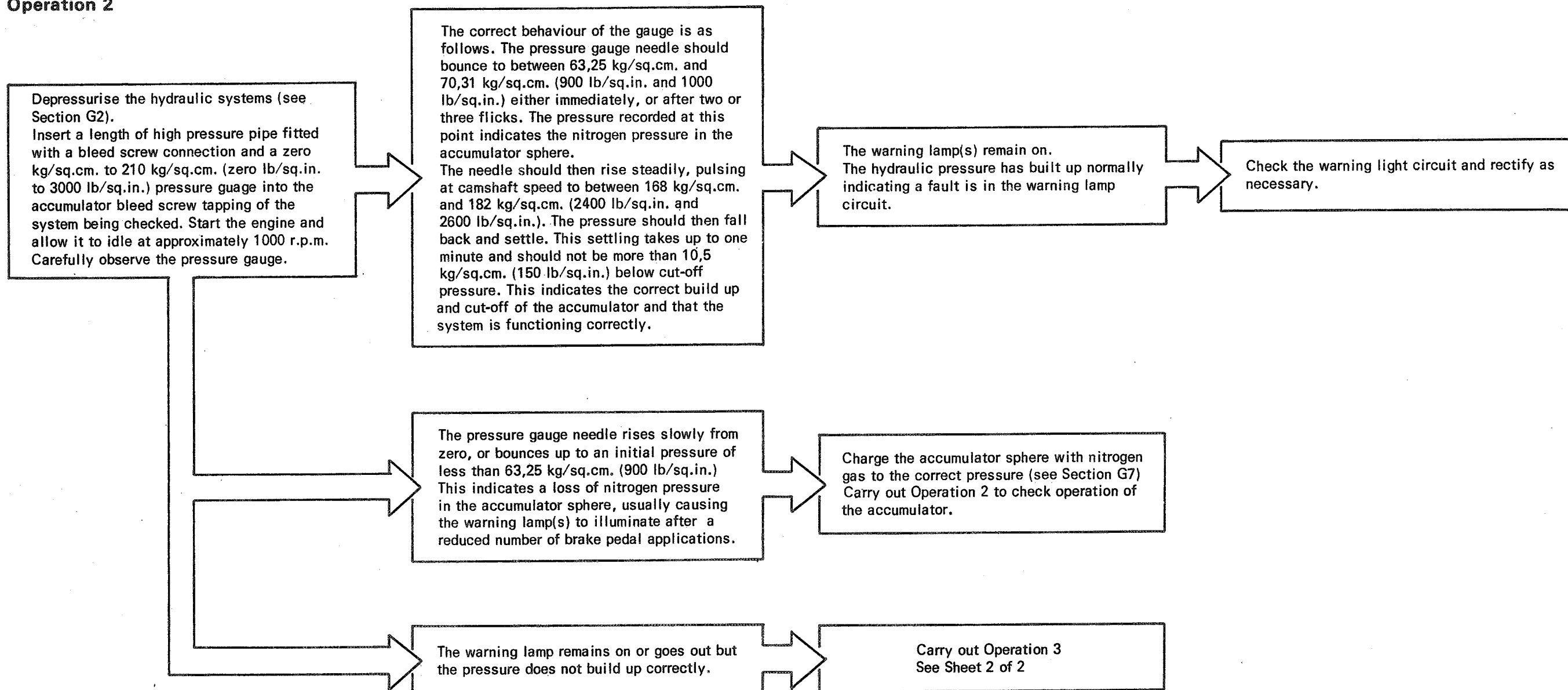
Facia warning lamps 1 BRAKE PRESSURE  
and/or 2 BRAKE PRESSURE illuminated  
(Intermittently or continuously)

Sheet 1 of 2

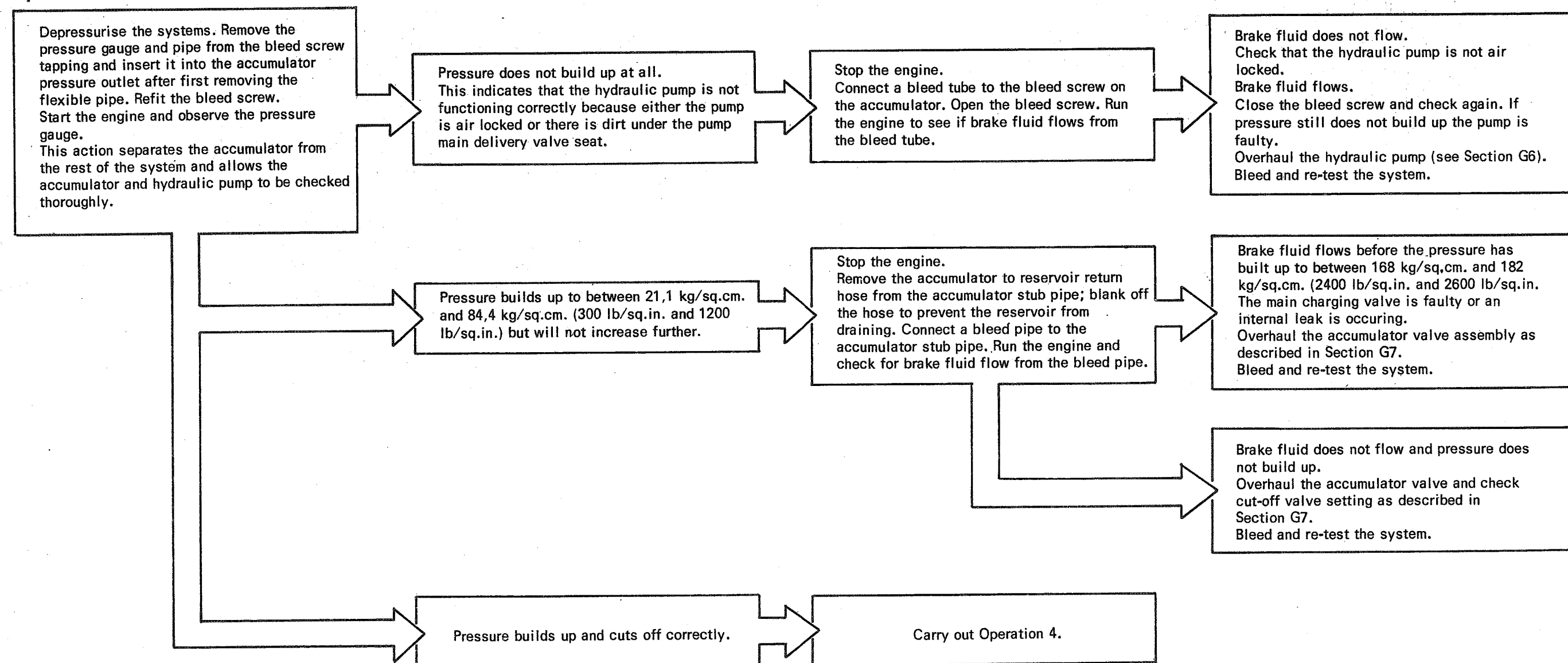
## Operation 1



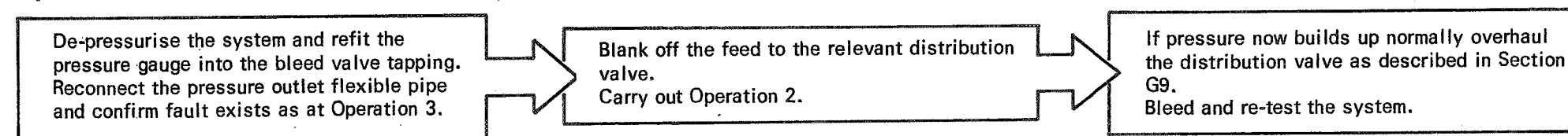
## Operation 2



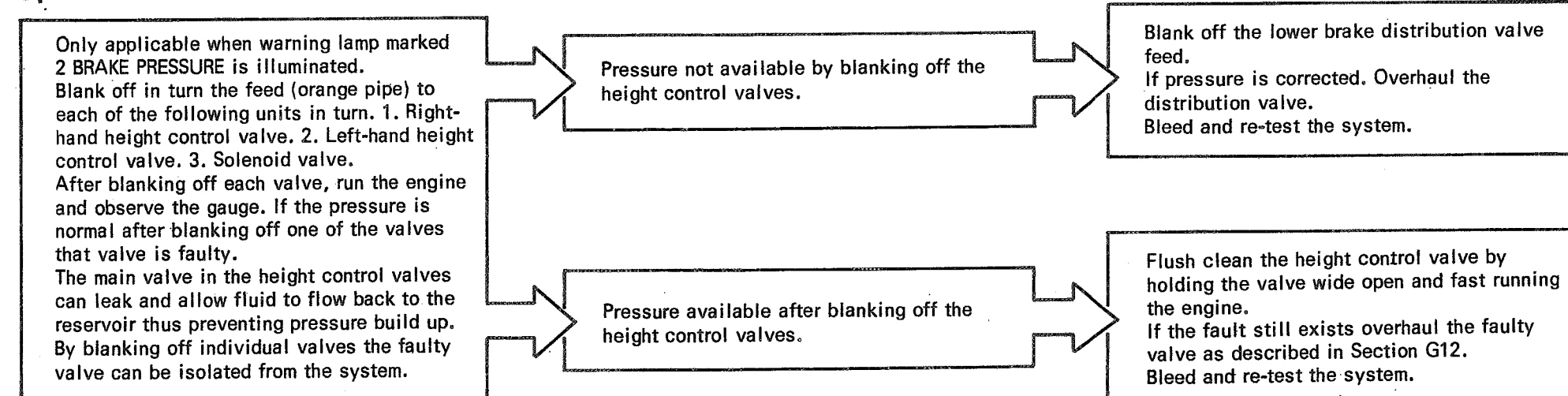
### Operation 3



### Operation 4



### Operation 5



Section G17

**Brake and height control  
hydraulic systems**

Systematic check sequence chart

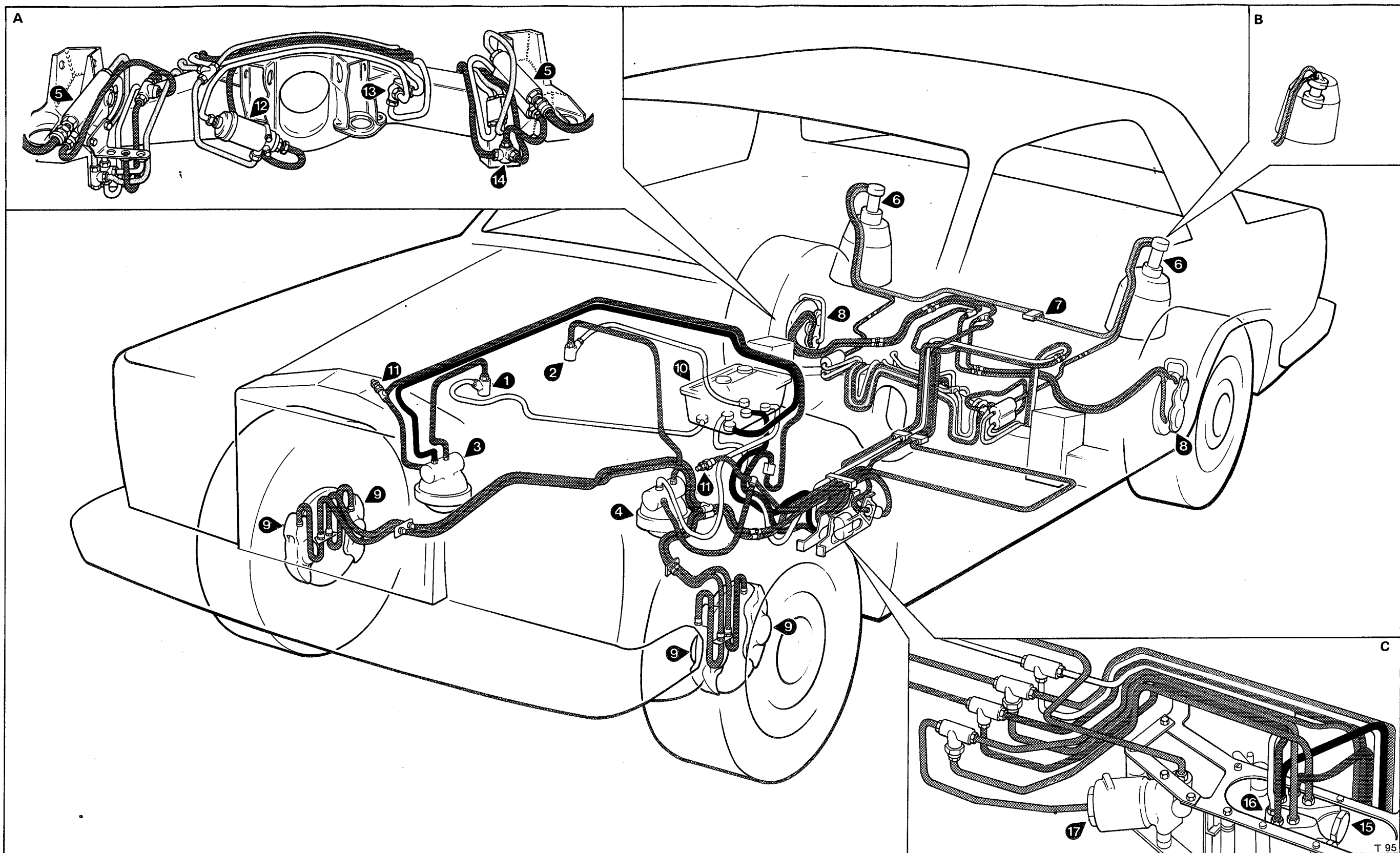
Facia warning lamps 1 BRAKE PRESSURE  
and/or 2 BRAKE PRESSURE illuminated  
(Intermittently or continuously)

Sheet 2 of 2

## Hydraulic system colour coding and component location

Left-hand drive cars

Figure G2



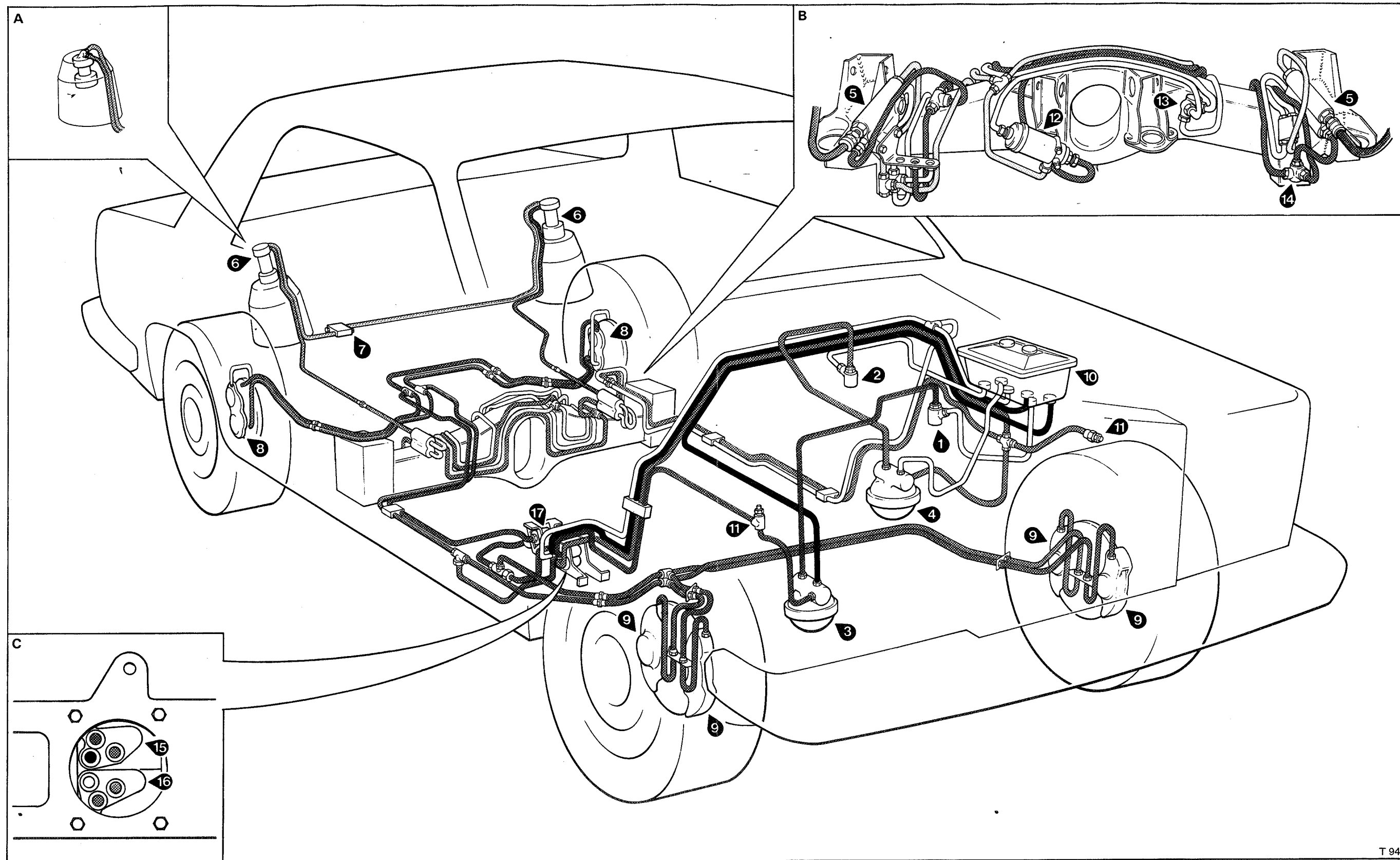
**Fig. G2 Hydraulic system colour coding and component location (Left-hand drive cars)**

- |  |                                      |   |
|--|--------------------------------------|---|
| 1 Hydraulic pump (No. 1 system)        | 9 Twin cylinder disc brake caliper   | 17 Deceleration conscious pressure limiting valve |
| 2 Hydraulic pump (No. 2 system)        | 10 Hydraulic fluid reservoirs        | A Rear sub frame rear view                        |
| 3 Hydraulic accumulator (No. 1 system) | 11 Pressure switches                 | B Height control ram connections – Corniche       |
| 4 Hydraulic accumulator (No. 2 system) | 12 Solenoid valve                    | Convertible cars                                  |
| 5 Height control valves                | 13 Low pressure line restrictor      | C Distribution valve port connections             |
| 6 Height control rams                  | 14 High pressure line restrictor     |   |
| 7 Height control ram bleed screws      | 15 Distribution valve (No. 1 system) |   |
| 8 Four cylinder disc brake caliper     | 16 Distribution valve (No. 2 system) |   |

## Hydraulic system colour coding and component location

Right-hand drive cars

Figure G1



T 94

Fig. G1 Hydraulic system colour coding and component location (Right-hand drive cars)

- 1 Hydraulic pump (No. 1 system)
- 2 Hydraulic pump (No. 2 system)
- 3 Hydraulic accumulator (No. 1 system)
- 4 Hydraulic accumulator (No. 2 system)
- 5 Height control valves
- 6 Height control rams
- 7 Height control ram bleed screws
- 8 Four cylinder disc brake caliper

- 9 Twin cylinder disc brake caliper
- 10 Hydraulic fluid reservoirs
- 11 Pressure switches
- 12 Solenoid valve
- 13 Low pressure line restrictor
- 14 High pressure line restrictor
- 15 Distribution valve (No. 1 system)
- 16 Distribution valve (No. 2 system)

- 17 Deceleration conscious pressure limiting valve
- A Height control ram connections – Corniche Convertible cars
- B Rear sub frame rear view
- C Distribution valve ports