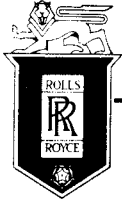


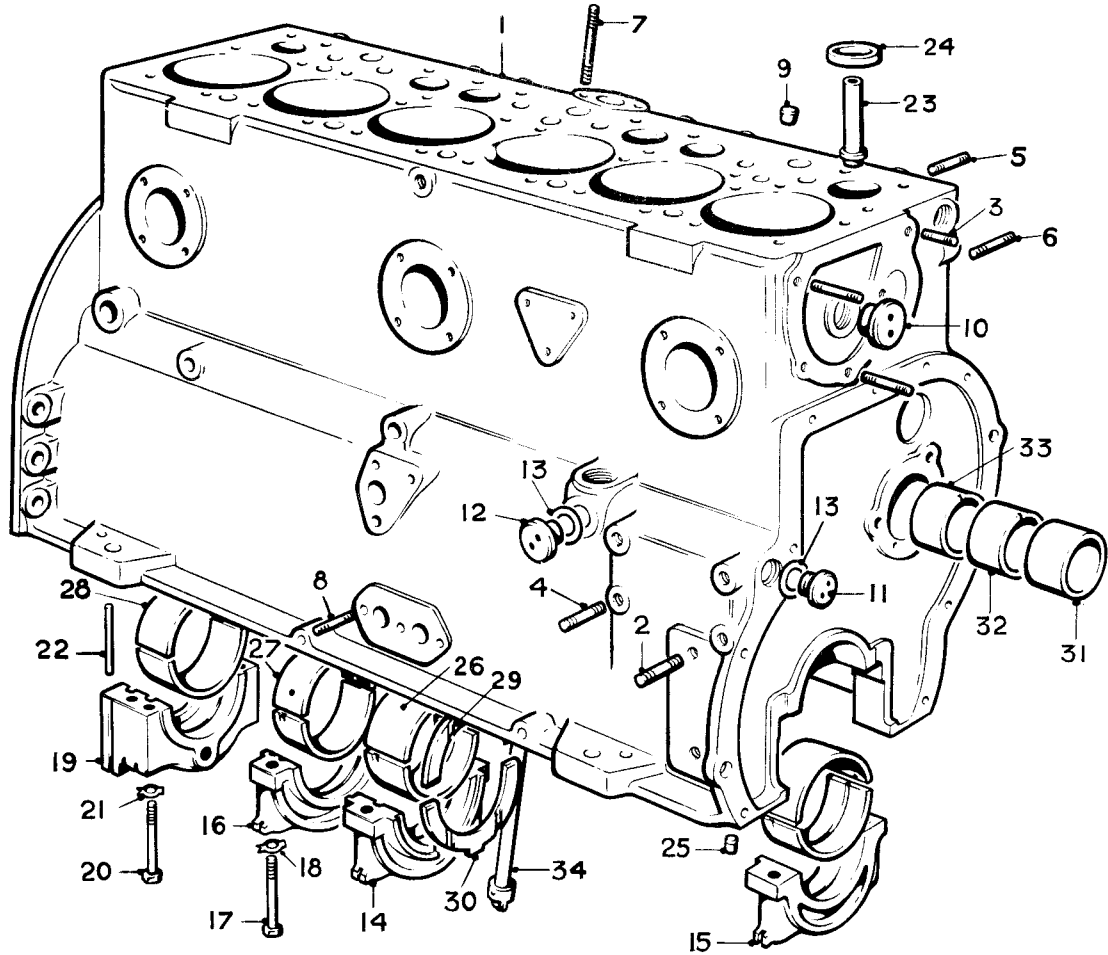
**SECTION A**  
**ENGINE**

<b>Title</b>	<b>Assembly</b>	<b>Page No.</b>
CRANKCASE	CYLINDER BLOCK	A. 1
		A. 2
	FRONT FACE	A. 3
		A. 4
	REAR FACE	A. 5
		A. 6
	L.H. FACE	A. 6
		A. 7
	R.H. FACE	A. 7
CYLINDER HEAD		A. 8
		A. 9
		A. 10
CRANKSHAFT		A. 11
	RH. 278	A. 12
		A. 13
	RH. 279	A. 13
CONNECTING RODS AND PISTONS		A. 14
SPRING DRIVE	RH. 278 & RH. 279	A. 15
CAM SHAFT		A. 16
ROCKER SHAFT		A. 17
VALVE MECHANISM		A. 18
WHEEL CASE		A. 19
OIL PUMP		A. 20
RELIEF VALVE		A. 21
THERMOSTAT AND CASING		A. 22
FLYWHEEL	RH. 278	A. 23
	RH. 279	A. 24



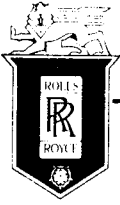
# SPARES schedule

SILVER CLOUD AND BENTLEY 'S' TYPE



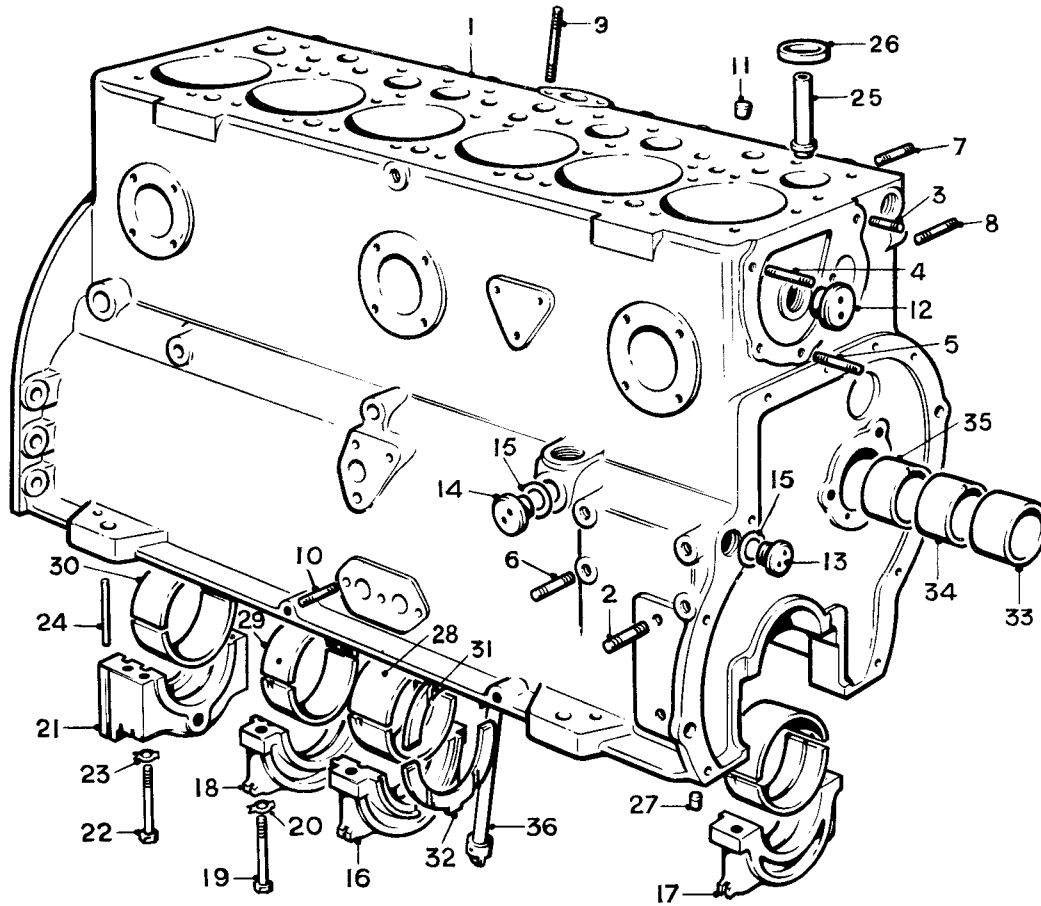
Ref.	Part No.	Description	No off	Ref.	Part No.	Description	No off
	<b>UE.2745</b>	<b>CRANKCASE UPPER HALF ASSY.</b>	<b>1</b>	(19)	<b>UE.456</b>	Cap, main bearing, rear	1
(1)	<b>UE.2018</b>	Crankcase	1	(20)	<b>UE.699</b>	Setscrew, rear bearing cap	4
(2)	<b>UA.801/Z</b>	Stud, mounting foot	4	(21)	<b>KB.7107/R</b>	Washer, lock, setscrew	4
(3)	<b>UA.754/Z</b>	Stud, 1.375", water pump	2	(22)	<b>RE.7144</b>	Oil seal, rear cap	2
(4)	<b>UA.752/Z</b>	Stud, dynamo	4	(23)	<b>RE.5890</b>	Guide, exhaust valve	6
	<b>UA.764/Z</b>	Stud, 2.625" steering pump	1	(24)	<b>RE.23855</b>	Insert, valve seat, standard	6
(5)	<b>RE.16814</b>	Stud, exhaust manifold	12		<b>RE.23983</b>	Insert, valve seat, .010" S/A	6
	<b>UA.755/Z</b>	Stud, oil pump	1	(25)	<b>RE.10416</b>	Dowel, lower half	2
(6)	<b>UA.413/Z</b>	Stud, tappet cover	4	(26)	<b>RE.14383</b>	Bush, main bearing, centre	2
	<b>UA.1201/Z</b>	Stud, breather pipe	1		<b>RE.22096</b>	Bush, main bearing, centre .010" U/S	2
(7)	<b>UA.713/Z</b>	Stud, distributor	2		<b>RE.22097</b>	Bush, main bearing, centre .020" U/S	2 Alt
(8)	<b>RE.16846</b>	Stud, relief valve	3		<b>RE.22098</b>	Bush, main bearing, centre .030" U/S	2
(9)	<b>KB.251/Z</b>	Stud, drain pipe	1		<b>RE.22099</b>	Bush, main bearing, centre .040" U/S	2
	<b>RE.6156</b>	Plug, dipstick boss	1	(27)	<b>RE.14385</b>	Bush, main bearing, inter.	10
	<b>UA.651/Z</b>	Plug, .625", core	4		<b>RE.22100</b>	Bush, main bearing, inter. .010" U/S	10
	<b>UA.653/Z</b>	Plug, .875", core	4		<b>RE.22101</b>	Bush, main bearing, inter. .020" U/S	10 Alt
	<b>KB.1092/R</b>	Washer, .875" plug	4		<b>RE.22102</b>	Bush, main bearing, inter. .030" U/S	10
(10)	<b>UA.655/Z</b>	Plug, 1.125", core	1		<b>RE.22103</b>	Bush, main bearing, inter. .040" U/S	10
(11)	<b>UA.552/R</b>	Plug, .750", oil gallery	2	(28)	<b>RE.14387</b>	Bush, main bearing, rear	2
(12)	<b>UA.552/R</b>	Plug, .750", filter boss	1		<b>RE.22104</b>	Bush, main bearing, rear .010" U/S	2
(13)	<b>KB.1091/R</b>	Washer, .750", plug	3		<b>RE.22105</b>	Bush, main bearing, rear .020" U/S	2 Alt
(14)	<b>UE.387</b>	Cap, main bearing, centre	1		<b>RE.22106</b>	Bush, main bearing, rear .030" U/S	2
(15)	<b>UE.362</b>	Cap, main bearing, front	1		<b>RE.22107</b>	Bush, main bearing, rear .040" U/S	2
(16)	<b>UE.388</b>	Cap, main bearing, inter.	4	(29)	<b>RE.14389</b>	Washer, thrust bearing, top	2
(17)	<b>UE.700</b>	Setscrew, main bearing cap	12	(30)	<b>RE.14390</b>	Washer, thrust bearing, bottom	2
(18)	<b>KB.7108/R</b>	Washer, lock, setscrew	12	(31)	<b>RE.210</b>	Bush, camshaft bearing, front	1
				(32)	<b>EB.3892</b>	Bush, camshaft bearing, inter.	2
				(33)	<b>EB.4146</b>	Bush, camshaft bearing, rear	1
				(34)	<b>RE.4920</b>	Shaft, distributor driving	1

## CRANKCASE—CYLINDER BLOCK



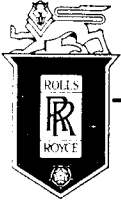
# SPARES schedule

SILVER CLOUD AND BENTLEY 'S' TYPE



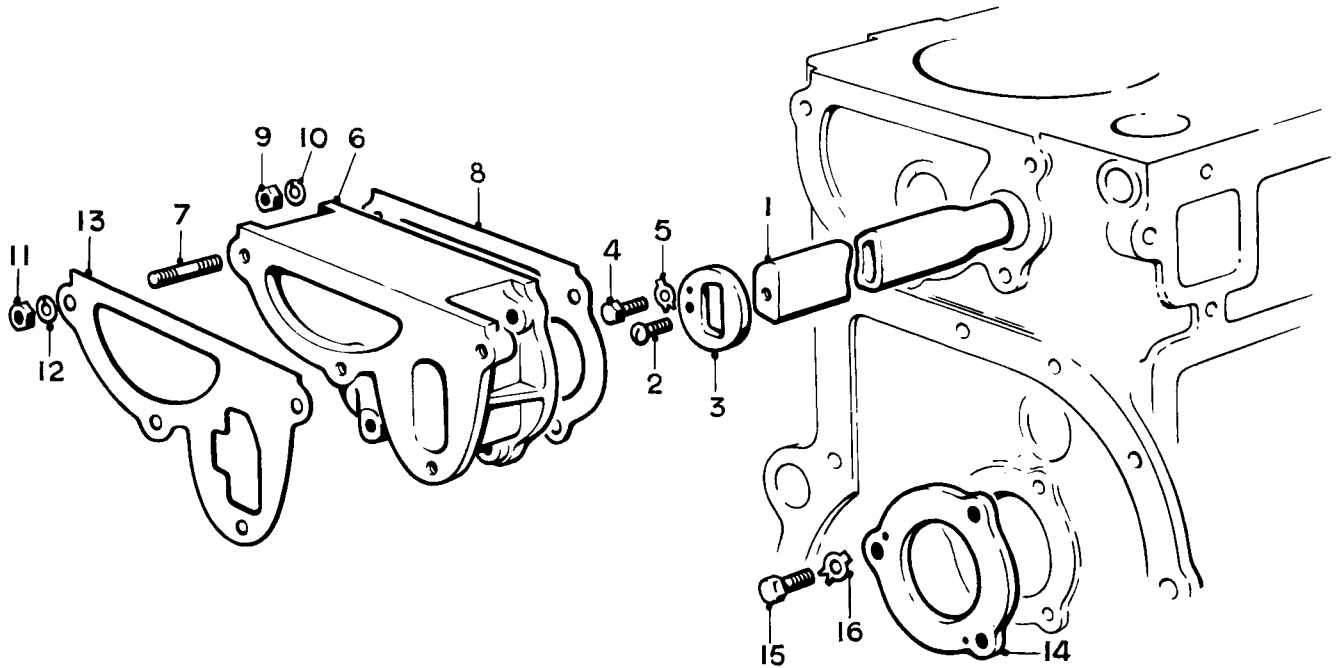
Ref.	Part No.	Description	No off	Ref.	Part No.	Description	No off
	<b>UE.4327</b>	<b>CRANKCASE UPPER HALF ASSY.</b>	<b>1</b>	(21)	UE.456	Cap, main bearing, rear	1
		(For cars with interior cooling)		(22)	UE.699	Setscrew, rear bearing cap	4
(1)	UE.2018	Crankcase	1	(23)	KB.7107/R	Washer, lock, setscrew	4
(2)	UA.801/Z	Stud, mounting foot	4	(24)	RE.7144	Oil seal, rear cap	2
(3)	UA.754/Z	Stud, 1.375", water pump	2	(25)	RE.5890	Guide, exhaust valve	6
(4)	UA.772/Z	Stud, 4.250", water pump	1	(26)	RE.23855	Insert, valve seat, standard	6
(5)	UA.767/Z	Stud, 3.00", water pump	2		RE.23983	Insert, valve seat, .010" S/A	6
(6)	UA.752/Z	Stud, dynamo	4	(27)	RE.10416	Dowel, lower half	2
	UA.764/Z	Stud, 2.625" steering pump	1	(28)	RE.14383	Bush, main bearing, centre	2
(7)	RE.16814	Stud, exhaust manifold	12		RE.22096	Bush, main bearing, centre .010" U/S	2
	UA.755/Z	Stud, oil pump	1		RE.22097	Bush, main bearing, centre .020" U/S	2 Alt
(8)	UA.413/Z	Stud, tappet cover	4		RE.22098	Bush, main bearing, centre .030" U/S	2
	UA.1201/Z	Stud, breather pipe	1		RE.22099	Bush, main bearing, centre .040" U/S	2
(9)	UA.713/Z	Stud, distributor	2	(29)	RE.14385	Bush, main bearing, inter.	10
(10)	RE.16846	Stud, relief valve	3		RE.22100	Bush, main bearing, inter. .010" U/S	10
	KB.251/Z	Stud, drain pipe	1		RE.22101	Bush, main bearing, inter. .020" U/S	10 Alt
(11)	RE.6156	Plug, dipstick boss	1		RE.22102	Bush, main bearing, inter. .030" U/S	10
	UA.651/Z	Plug, .625", core	4		RE.22103	Bush, main bearing, inter. .040" U/S	10
	UA.653/Z	Plug, .875", core	4	(30)	RE.14387	Bush, main bearing, rear	2
	KB.1092/R	Washer, .875" plug	4		RE.22104	Bush, main bearing, rear .010" U/S	2
(12)	UA.655/Z	Plug, 1.125", core	1		RE.22105	Bush, main bearing, rear .020" U/S	2 Alt
(13)	UA.552/R	Plug, .750", oil gallery	2		RE.22106	Bush, main bearing, rear .030" U/S	2
(14)	UA.552/R	Plug, .750", filter boss	1		RE.22107	Bush, main bearing, rear .040" U/S	2
(15)	KB.1091/R	Washer, .750", plug	3	(31)	RE.14389	Washer, thrust bearing, top	2
(16)	UE.387	Cap, main bearing, centre	1	(32)	RE.14390	Washer, thrust bearing, bottom	2
(17)	UE.362	Cap, main bearing, front	1	(33)	RE.210	Bush, camshaft bearing, front	1
(18)	UE.388	Cap, main bearing, inter.	4	(34)	EB.3892	Bush, camshaft bearing, inter.	2
(19)	UE.700	Setscrew, main bearing cap	12	(35)	EB.4146	Bush, camshaft bearing, rear	1
(20)	KB.7108/R	Washer, lock, setscrew	12	(36)	RE.4920	Shaft, distributor driving	1

## CRANKCASE—CYLINDER BLOCK



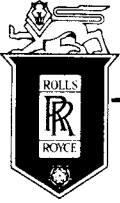
# SPARES schedule

SILVER CLOUD AND BENTLEY 'S' TYPE



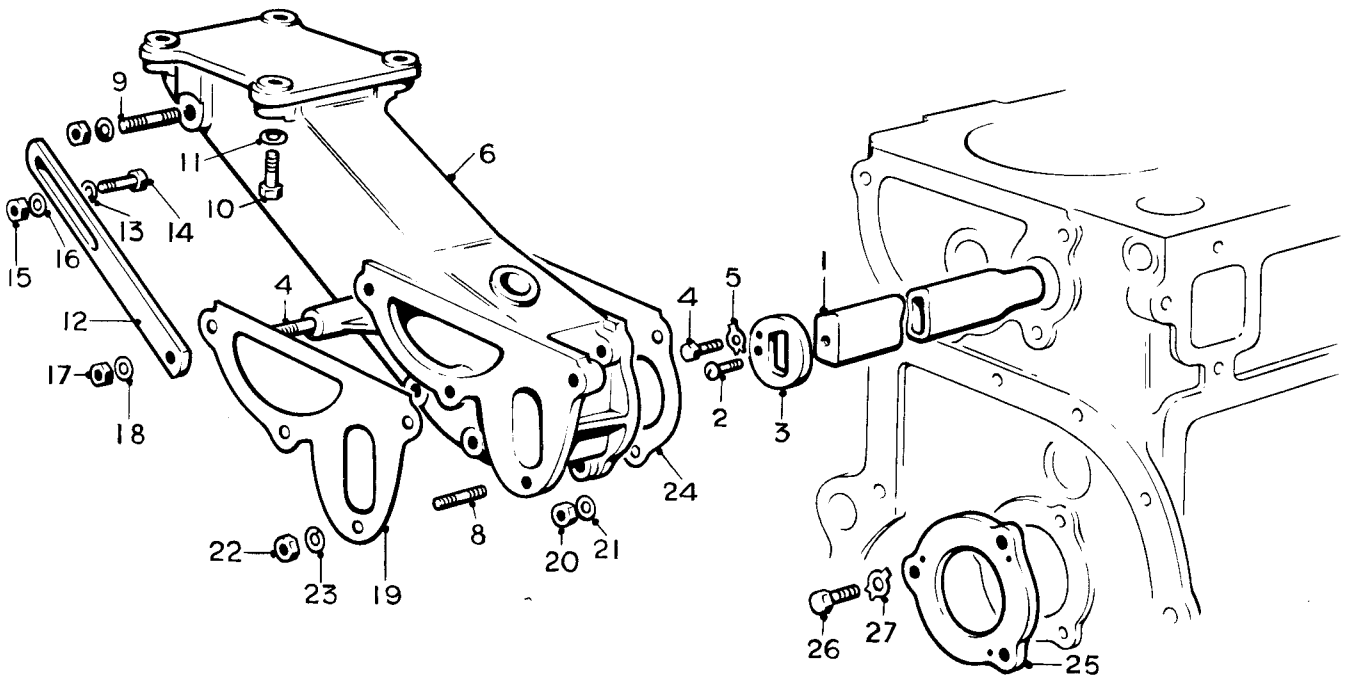
Ref.	Part No.	Description	No off
(1)	RE.20949	Water Gallery	1
(2)	UA.3052	Screw, water gallery	1
(3)	UE.524	Plate, end, gallery	1
(4)	UA.1501/Z	Setscrew, end plate	1
(5)	KB.7104/R	Tab washer, setscrew	1
(6)	UE.420	ADAPTOR, WATER PUMP, ASSY.	1
(7)	UA.909/Z	Stud	4
(8)	RE.16323	Joint, adaptor to crankcase	1
(9)	UA.352/Z	Nut, adaptor	5
(10)	K.9009/Z	Washer, spring, adaptor	5
(11)	UA.302/Z	Nut, water, pump	4
(12)	K.9009/Z	Washer, spring, pump	4
(13)	RE.5772	Joint, water pump to adaptor	1
(14)	RE.142	Thrust plate, camshaft	1
(15)	UA.103/Z	Setscrew, thrust plate	3
(16)	KB.7106/Z	Washer, tab, setscrew	3

## CRANKCASE—FRONT FACE



# SPARES schedule

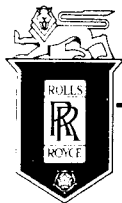
SILVER CLOUD AND BENTLEY 'S' TYPE



Ref.	Part No.	Description	No off
(1)	RE.20949	Water Gallery	1
(2)	UA.3052/Z	Screw, water gallery	1
(3)	UE.524	Plate, end, gallery	1
(4)	UA.1501/Z	Setscrew, end plate	1
(5)	KB.7104/R	Tab washer, setscrew	1
(6)	UE.2810	ADAPTOR, WATER PUMP, ASSY.	1
(7)	UA.903/Z	Stud, swivel arm	1
(8)	UA.909/Z	Stud, water pump	3
(9)	UA.953/Z	Stud, strut	1
(10)	UE.3738	Bolt, mounting, compressor	4
(11)	K.9010/Z	Washer, bolt	4
(12)	UE.4101	Strut, adjusting	1
(13)	K.9009/Z	Washer, strut to lever	1
(14)	UA.153/Z	Setscrew, strut to lever	1
(15)	RE.22428	Nut, lever	1
(16)	K.9010/Z	Washer, nut	1
(17)	UA.302/Z	Nut, adjusting strut	1
(18)	K.9009/Z	Washer, nut	1
(19)	RE.5772	Joint, adaptor to crankcase	1
(20)	UA.352/Z	Nut, pump adaptor	5
(21)	K.9009/Z	Washer, spring, nut	5
(22)	UA.302/Z	Nut, pump to adaptor	3
(23)	K9009/Z	Washer, spring, nut	3
(24)	UE.2948	Joint, pump to adaptor	1
(25)	RE.142	Thrust plate, camshaft	1
(26)	UA.103/Z	Setscrew, thrust plate	3
(27)	KB.7106/Z	Washer, tab, setscrew	3

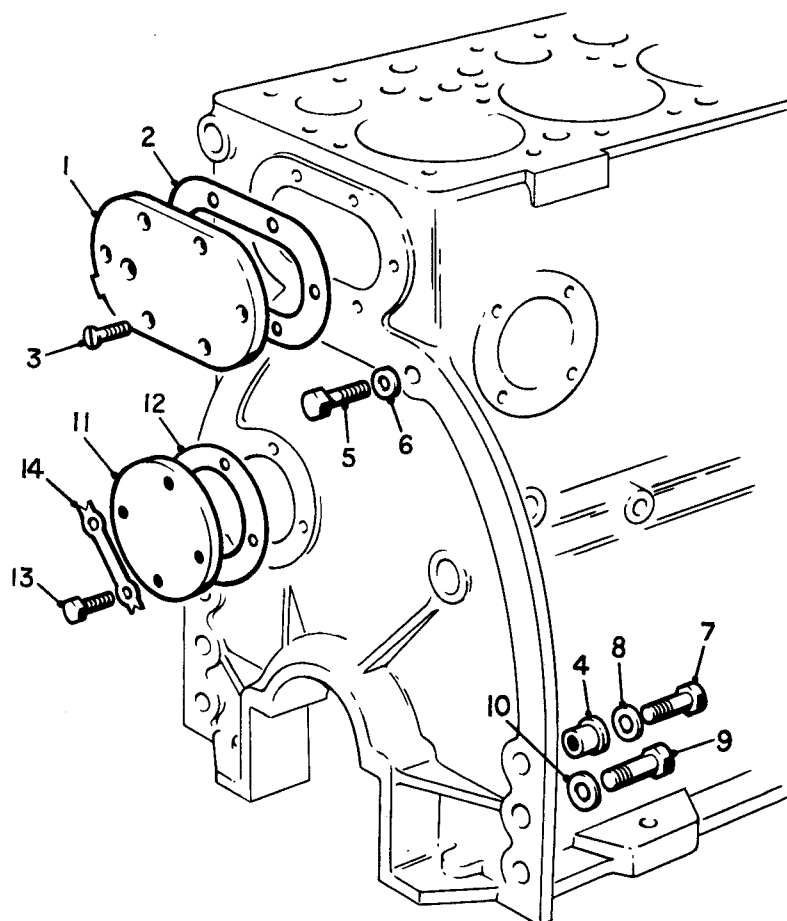
## CRANKCASE—FRONT FACE

(Cars with interior cooling)



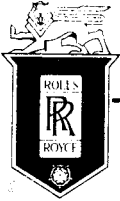
# SPARES schedule

SILVER CLOUD AND BENTLEY 'S' TYPE



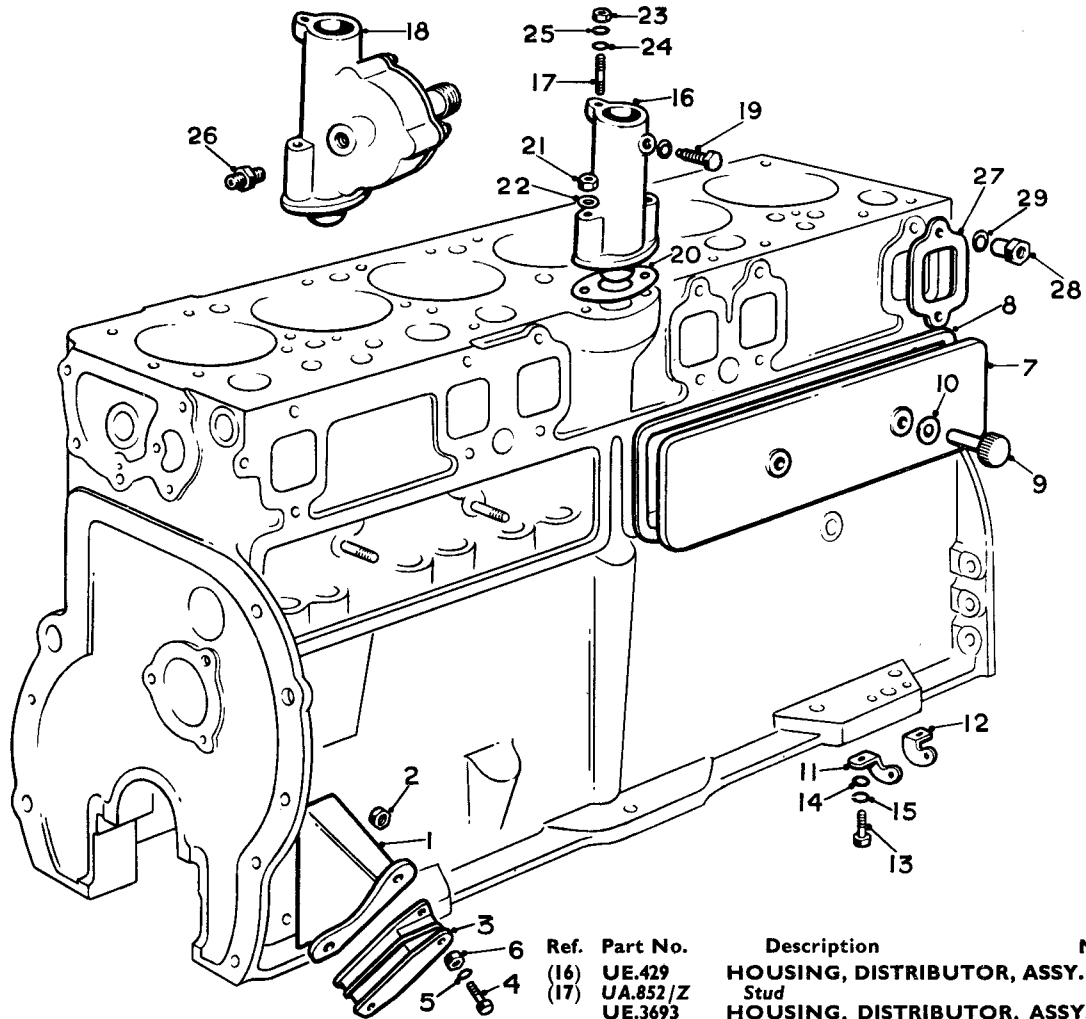
Ref.	Part No.	Description	No off
(1)	RE.20948	Cover, water jacket	1
(2)	RE.14031	Joint, cover	1
(3)	UA.3025/Z	Setscrew, cover	6
(4)	RE.14288	Dowel, clutch housing	2
(5)	UA.271/Z	Setscrew, clutch housing, top	2
	UA.264/Z	Setscrew, clutch housing, top ("Continental" only)	2
(6)	K.9011/Z	Washer, setscrew	2
(7)	UA.160/Z	Setscrew, .312" clutch housing, lower	2
(8)	UA.1252/Z	Washer, .312" setscrew	2
(9)	UA.258/Z	Setscrew, .437", clutch housing, lower	4
(10)	UA.1254/Z	Washer, .437" setscrew	4
(11)	RE.20848	Cover, camshaft rear bearing	1
(12)	RE.14292	Joint, cover	1
(13)	UA.104/Z	Setscrew, cover	4
(14)	RE.14029	Washer, tab, setscrew	2

## CRANKCASE—REAR FACE



# SPARES schedule

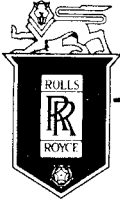
SILVER CLOUD AND BENTLEY 'S' TYPE



Ref.	Part No.	Description	No off	Ref.	Part No.	Description	No off
(1)	UE.2689	Mounting, engine foot	1	(16)	UE.429	HOUSING, DISTRIBUTOR, ASSY.	1
(2)	RE.22428	Nut, mounting stud	2	(17)	UA.852/Z	Stud	1
(3)	UE.4487	Block, mounting	1		UE.3693	HOUSING, DISTRIBUTOR, ASSY.	1
(4)	UA.152/Z	Bolt, mounting block	4		UA.853/Z	Stud	1
(5)	K.9009/Z	Washer, bolt	4	(18)	UE.2665	HOUSING, DISTRIBUTOR & TACHO DRIVE, ASSY.	1
(6)	UA.352/Z	Nut, bolt	4			(“ Continental ” only)	
(7)	RE.15082	Cover, tappet	2		UE.4490	HOUSING, DISTRIBUTOR & TACHO DRIVE, ASSY.	1
(8)	RE.15083	Joint, cover	2			(“ Continental ” 8.00 : 1 compression)	
(9)	UE.2834	Cap nut, tappet cover	4		UE.3444	HOUSING, DISTRIBUTOR & TACHO DRIVE, ASSY.	1
(10)	RF.3274	Washer, cap nut	4		UE.3488	Union, oil supply	1
(11)	UE.1148	Bracket, exhaust stay	1	(19)	UE.412	Setscrew, dist. retaining	1
(12)	UE.1149	Bracket, exhaust stay	1	(20)	EB.4042	Joint, housing	1
(13)	UA.104/Z	Setscrew, bracket	2	(21)	UA.301/Z	Nut, housing	2
(14)	UA.1251/Z	Washer, plain, setscrew	2	(22)	K.9008/Z	Washer, nut	2
(15)	K.9008/Z	Washer, spring, setscrew	2	(23)	UA.351/Z	Nut, dist. clamping	1
	UE.485	Fulcrum, T/V control	1	(24)	K.4407/Z	Washer, plain nut	1
	K.4405/Z	Washer, fulcrum	1	(25)	K.9008/Z	Washer, spring, nut	1
	K.9008/Z	Washer, spring, fulcrum	1			Standard cars only	
	UE.402	Distance piece, fulcrum	1	(26)	UE.2662	Junction, oil supply	1
	KC.152/Z	Setscrew, fulcrum	1	(27)	UE.411	Joint, exhaust manifold	6
	K.9006/Z	Washer, setscrew	1	(28)	RE.14285	Nut, exhaust manifold	12
				(29)	UA.1252/R	Washer, exhaust nut	12

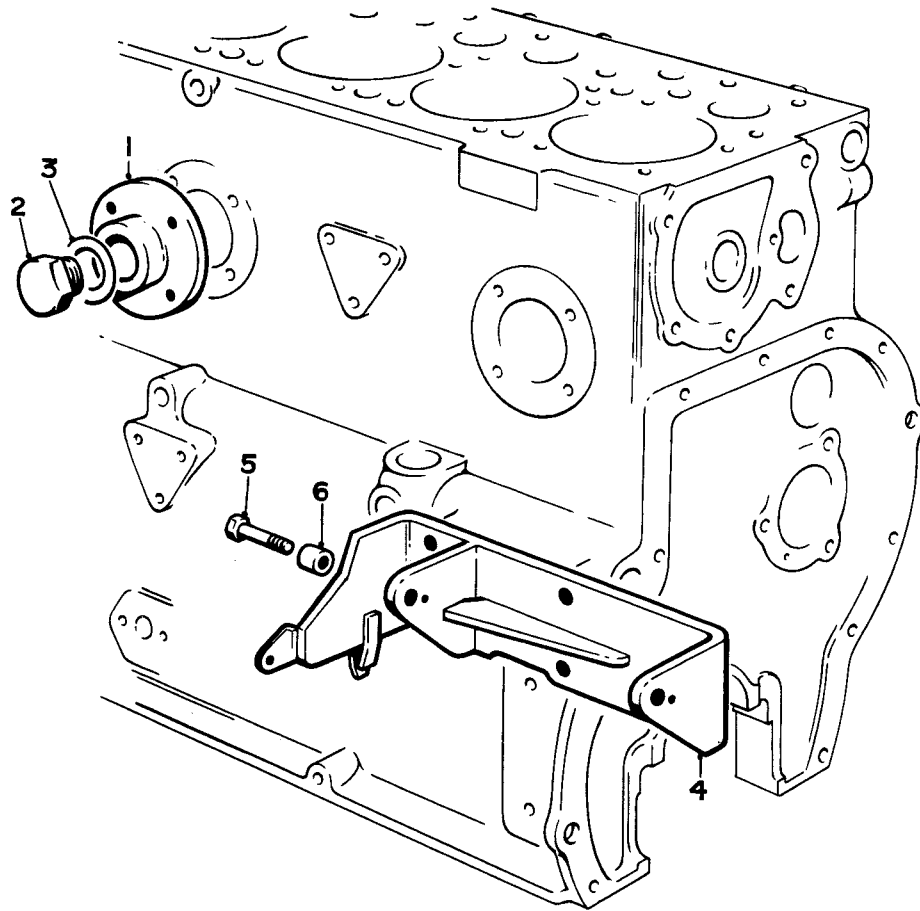
## CRANKCASE—L.H. FACE





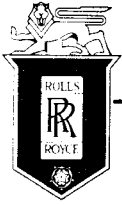
# SPARES schedule

SILVER CLOUD AND BENTLEY 'S' TYPE



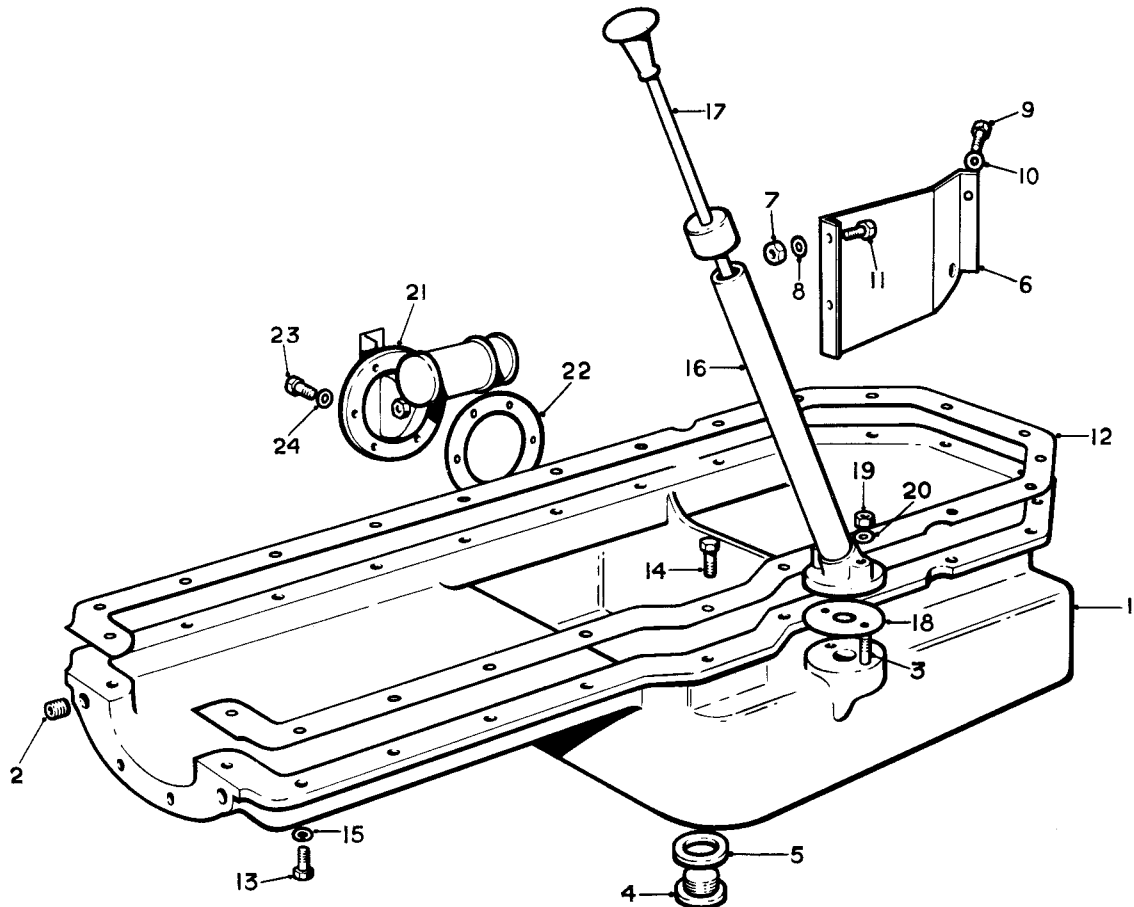
Ref.	Part No.	Description	No off
(1)	RE.20281	Adaptor, engine heater	1
(2)	RE.12762	Plug, adaptor	1
(3)	KB.1188/R	Washer, plug	1
(4)	UE.4415	Bracket, dynamo mounting	1 — Interior cooling
	UE.5284	Bracket, dynamo mounting	1 — Interior cooling with special switch gear
(5)	UE.448	Bolt, dynamo pivot	1
	UE.5198	Bolt, dynamo pivot	1 — Interior cooling
(6)	UE.5199	Distance piece, dyanmo mounting	2

## CRANKCASE—R.H. FACE SPECIAL PARTS



# SPARES schedule

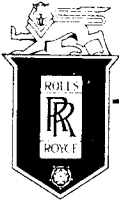
SILVER CLOUD AND BENTLEY 'S' TYPE



Ref.	Part No.	Description	No off
(1)	UE.6305	CRANKCASE SUMP, ASSY.	1
(2)	UA.501/Z	Insert, wheelcase fixing	2
(3)	UA.856/Z	Stud, dipstick	2
(4)	UG.526	Plug, drain	1
(5)	KB.1093/R	Washer, plug	1
(6)	UE.2744	Baffle, oil float	1
(7)	K.4006/Z	Nut, baffle	3
(8)	K.4404/Z	Washer, nut	3
(9)	KC.153/Z	Setscrew, baffle, front	1
(10)	RF.3264	Washer, setscrew	1
(11)	UA.1502/Z	Setscrew, baffle, web	1
(12)	UE.454	Joint, lower half	1
(13)	UA.154/Z	Setscrew, lower half	21
(14)	UA.155/Z	Setscrew, lower half	1
(15)	K.9009/Z	Washer, setscrew	22
(16)	UE.606	TUBE, DIPSTICK, ASSY.	1
(17)	UE.604	DIPSTICK, ASSEMBLY	1
	UE.4048	TUBE, DIPSTICK, ASSEMBLY	1
	UE.4164	DIPSTICK, ASSEMBLY	1
(18)	UE.2773	Joint, dipstick boss	1
(19)	UA.301/Z	Nut, dipstick	2
(20)	K.9008/Z	Washer, nut	2
(21)	DB.1870	Oil gauge	1
(22)	RF.8404	Joint, oil gauge	1
(23)	K.1807/Z	Screw, oil gauge	6
(24)	K.9005/Z	Washer, screw	6

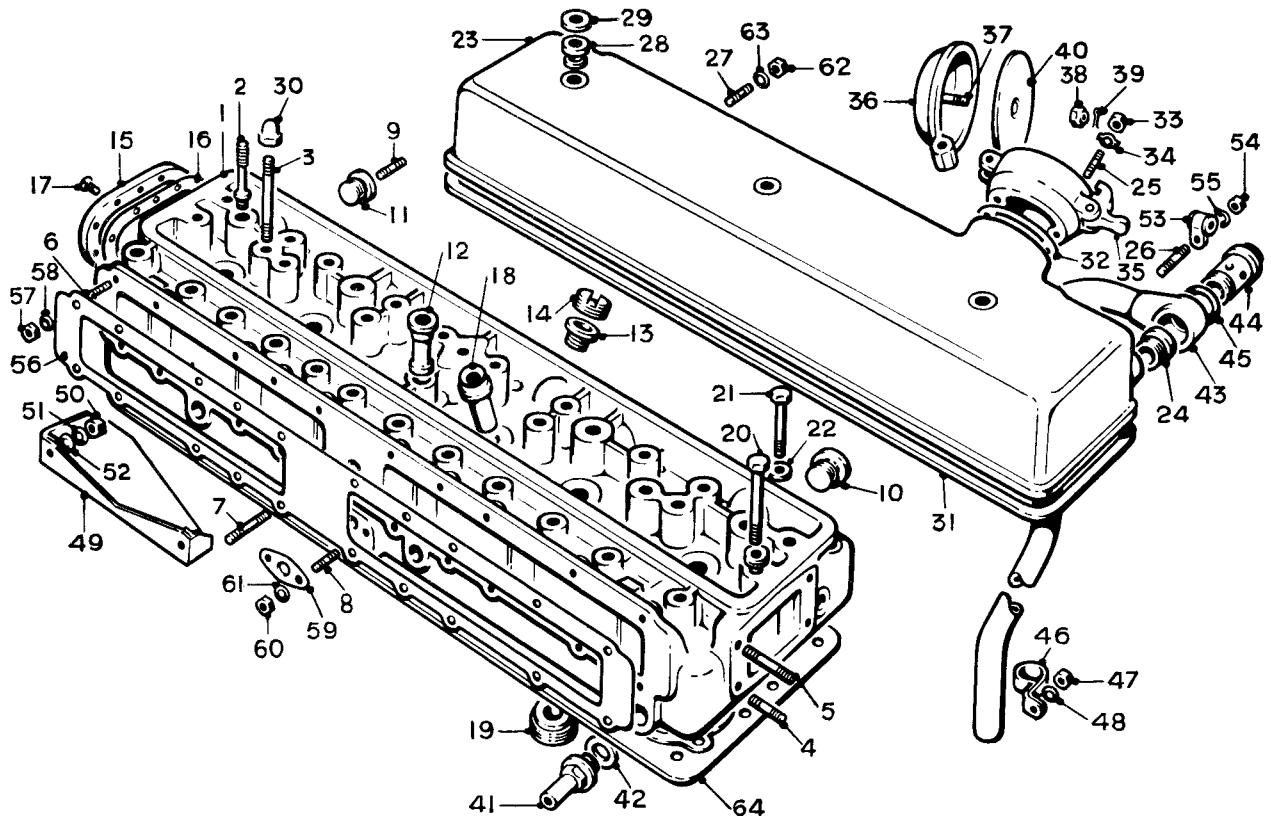
"Continental" with synchro gearbox

## CRANKCASE - LOWER HALF



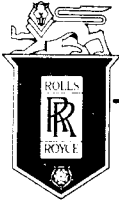
# SPARES schedule

SILVER CLOUD AND BENTLEY 'S' TYPE



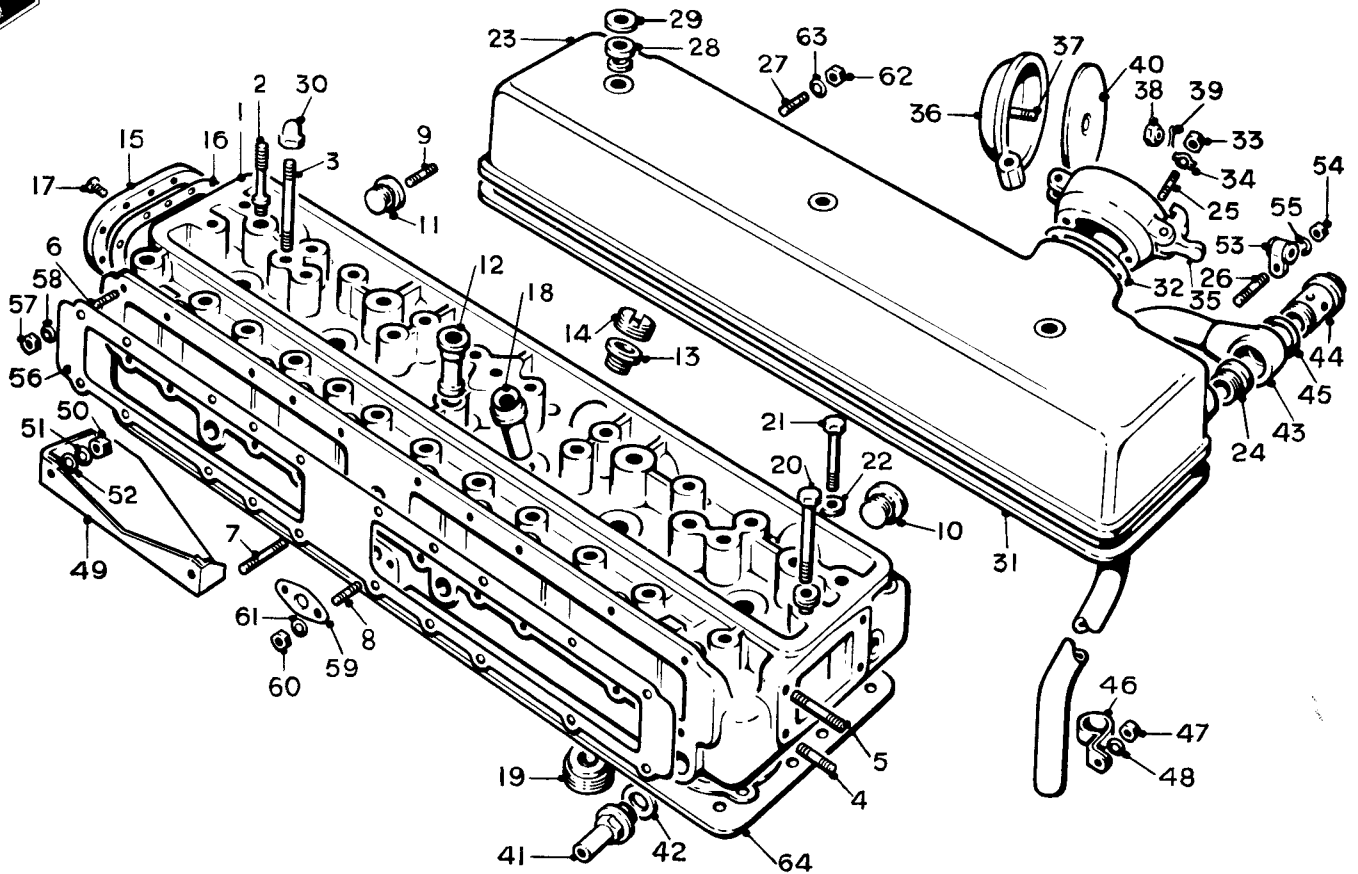
Ref.	Part No.	Description	No off	Ref.	Part No.	Description	No off
	<b>UE.2331</b>	<b>CYLINDER HEAD ASSY.</b>	1	(30)	<b>RE.14062</b>	Dome nut, cover	3
		(6.6 : 1 compression except "Continental")		(31)	<b>UE.379</b>	Joint, cover	1
(1)	<b>UE.2299</b>	Cylinder head	1	(32)	<b>RE.11319</b>	Joint, adaptor, filler cap	1
(2)	<b>UE.358</b>	Stud, rocker pedestal	5	(33)	<b>UA.301/Z</b>	Nut, adaptor	1
(3)	<b>UA.922/R</b>	Stud, rocker cover	3	(34)	<b>KB.7106</b>	Tab washer, adaptor	1
(4)	<b>UA.905/R</b>	Stud, 1.625", thermostat	2		<b>RE.15934S/A</b>	<b>OIL FILLER ADAPTOR &amp; CAP</b>	1
(5)	<b>UA.909/R</b>	Stud, 2.125", thermostat	2	(35)	<b>RE.11318</b>	Adaptor	1
(6)	<b>UA.856/Z</b>	Stud, 1.625", inlet facing	18	(36)	<b>RE.15934</b>	Cap and stud	1
(7)	<b>UA.861/Z</b>	Stud, 2.250", inlet facing	2	(37)	<b>RE.10854</b>	Stud, cap	1
(8)	<b>UA.858/Z</b>	Stud, hotspot	2	(38)	<b>RE.10853</b>	Nut, stud	1
(9)	<b>UA.1603/Z</b>	Stud, core plug	2	(39)	<b>K.4648/Z</b>	Split, pin, nut	1
(10)	<b>RE.9033</b>	Core plug	6	(40)	<b>RE.15879</b>	Washer assembly, cork	1
(11)	<b>RE.10422</b>	Core plug, Nos. 4 & 6	2	(41)	<b>UE.1306</b>	Adaptor, feed, heater and demister	2
	<b>UA.3101/Z</b>	Plug, oil drilling	1	(42)	<b>RE.5007</b>	Washer, adaptor	2
(12)	<b>UE.350</b>	Bush centre	1	(43)	<b>UE.764</b>	<b>BREATHER PIPE ASSEMBLY</b>	1
(13)	<b>RE.3682</b>	Adaptor, spark plug	6		<b>UE.766</b>	Connection	1
(14)	<b>RE.3681</b>	Ring, lock, adaptor	6	(44)	<b>UE.767</b>	Bolt, breather connection	1
(15)	<b>EB.4002</b>	Cover, rear end	1	(45)	<b>KB.1092</b>	Washer, bolt	1
(16)	<b>RE.3422</b>	Joint, cover	1	(46)	<b>RE.5467</b>	Clip, breather pipe	1
(17)	<b>K.2813/Z</b>	Screw, cover	10	(47)	<b>UA.351/Z</b>	Nut, clip	1
(18)	<b>RE.361</b>	Guide, inlet valve	6	(48)	<b>K.9008/Z</b>	Washer, clip	1
	<b>RE.14507</b>	Guide, inlet valve, .002" O/S	6	(49)	<b>UE.658</b>	Heat-shield	1
(19)	<b>UE.351</b>	Seating, inlet valve	6	(50)	<b>K.4307/Z</b>	Nut, stud, heat-shield	2
(20)	<b>UE.2166</b>	Setscrew, head, long	29	(51)	<b>K.9006/Z</b>	Washer, spring, nut	2
(21)	<b>UE.2167</b>	Setscrew, head, short	10	(52)	<b>K.4404/Z</b>	Washer, plain, nut	2
(22)	<b>UE.720</b>	Washer, setscrew	39	(53)	<b>RE.14770</b>	Clip, H.T. lead	1
(23)	<b>UE.360</b>	<b>ROCKER COVER ASSEMBLY</b>	1	(54)	<b>K.4006/Z</b>	Nut, clip	1
		(Bentley cars)		(55)	<b>K.9006/Z</b>	Washer, clip	1
	<b>UE.2747</b>	<b>ROCKER COVER ASSEMBLY</b>	1	(56)	<b>UE.2303</b>	Joint, inlet face	1
		(R.R. cars)		(57)	<b>UA.301/Z</b>	Nut, stud, inlet face	20
(24)	<b>UE.363</b>	Insert, breather	1	(58)	<b>K.9008/Z</b>	Washer, nut	20
(25)	<b>UA.853/Z</b>	Stud, oil filter adaptor	2	(59)	<b>RE.15203</b>	Joint, hotspot	1
(26)	<b>UA.1401/Z</b>	Stud, clip	1	(60)	<b>UA.301/Z</b>	Nut, hotspot, face	2
(27)	<b>UA.851/Z</b>	Stud, ignition tube	2	(61)	<b>K.9008/Z</b>	Washer, hotspot face	2
(28)	<b>EB.3998</b>	Bush, cover studs	3	(62)	<b>UA.301/Z</b>	Nut, ignition wire tubes	2
(29)	<b>RE.14060</b>	Backing plate, bush	3	(63)	<b>K.9008/Z</b>	Washer, ignition wire tubes	2
				(64)	<b>UE.5053</b>	Gasket, cylinder head	1

## CYLINDER HEAD



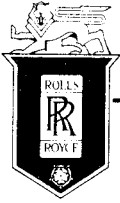
# SPARES schedule

SILVER CLOUD AND BENTLEY 'S' TYPE



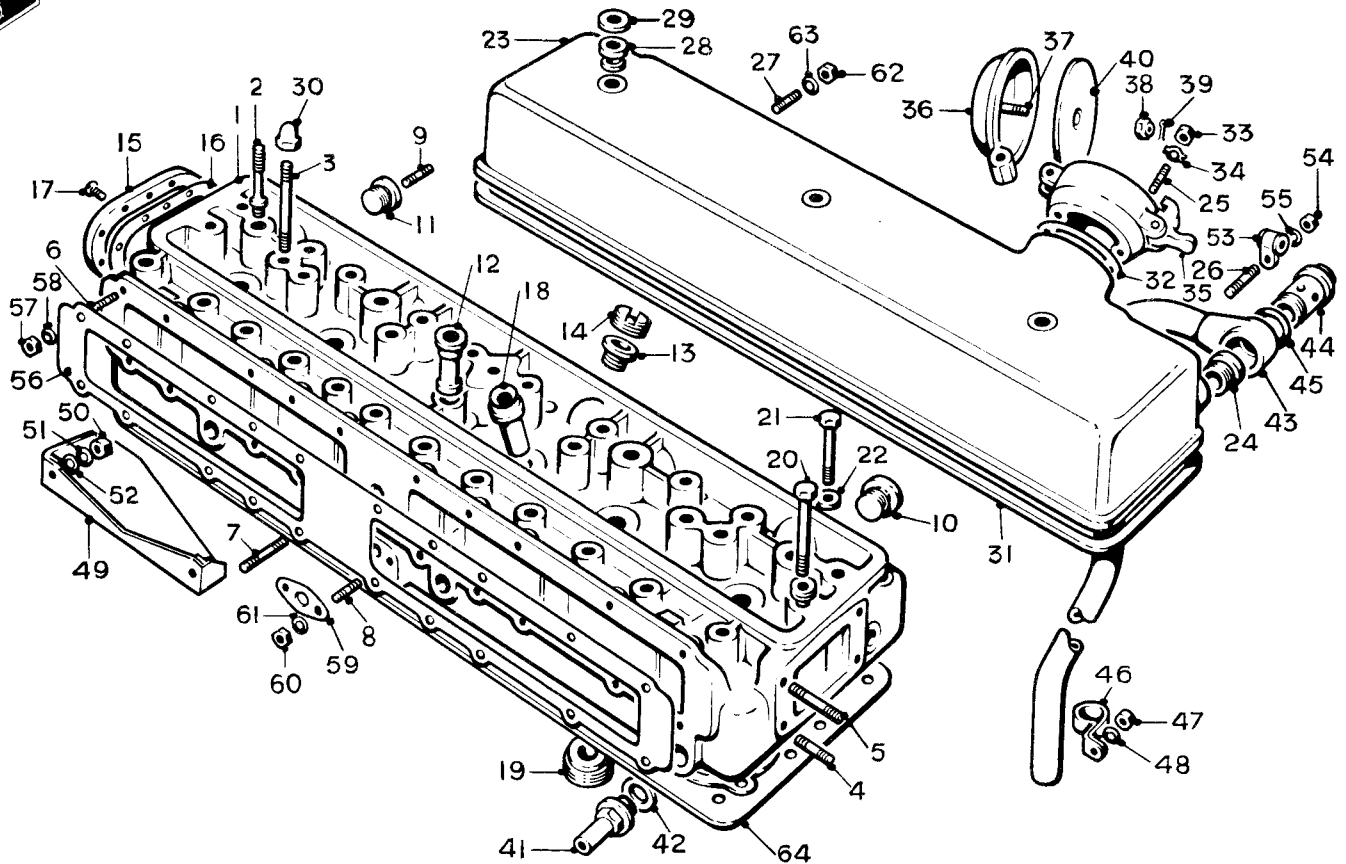
Ref.	Part No.	Description	No off	Ref.	Part No.	Description	No off
	<b>UE.2551</b>	<b>CYLINDER HEAD ASSY.</b>	<b>1</b>	(30)	RE.14062	Dome nut, cover	3
		(7.25 : 1 compression "Continental" only)		(31)	UE.379	Joint, cover	1
(1)	UE.2405	Cylinder head	1	(32)	RE.11319	Joint, adaptor, filler cap	1
(2)	UE.358	Stud, rocker pedestal	5	(33)	UA.301/Z	Nut, adaptor	1
(3)	UA.922/R	Stud, rocker cover	3	(34)	KB.7106	Tab washer, adaptor	1
(4)	UA.905/R	Stud, 1.625", thermostat	2	<b>RE.15934S/A OIL FILLER ADAPTOR &amp; CAP</b>			
(5)	UA.909/R	Stud, 2.125", thermostat	2	(35)	RE.11318	Adaptor	1
(6)	UA.856/Z	Stud, 1.625", inlet facing	18	(36)	RE.15934	Cap and stud	1
(7)	UA.861/Z	Stud, 2.250", inlet facing	2	(37)	RE.10854	Stud, cap	1
(8)	UA.858/Z	Stud, hotspot	2	(38)	RE.10853	Nut, stud	1
(9)	UA.1603/Z	Stud, core plug	2	(39)	K.4648/Z	Split, pin, nut	1
(10)	RE.9033	Core plug	6	(40)	RE.15879	Washer assembly, cork	1
(11)	RE.10422	Core plug, Nos. 4 & 6	2	(41)	UE.1306	Adaptor, feed, heater and demister	2
	UA.3101/Z	Plug, oil drilling	1	(42)	RE.5007	Washer, adaptor	2
(12)	UE.350	Bush centre	1	(43)	UE.764	<b>BREATHER PIPE ASSEMBLY</b>	
(13)	RE.3682	Adaptor, spark plug	6		UE.766	Connection	1
(14)	RE.3681	Ring, lock, adaptor	6	(44)	UE.767	Bolt, breather connection	1
(15)	EB.4002	Cover, rear end	1	(45)	KB.1092	Washer, bolt	1
(16)	RE.3422	Joint, cover	1	(46)	RE.5467	Clip, breather pipe	1
(17)	K.2813/Z	Screw, cover	10	(47)	UA.351/Z	Nut, clip	1
(18)	RE.361	Guide, inlet valve	6	(48)	K.9008/Z	Washer, clip	1
	RE.14507	Guide, inlet valve, .002" O/S	6	(49)	UE.658	Heat-shield	1
(19)	UE.351	Seating, inlet valve	6	(50)	K.4307/Z	Nut, stud, heat-shield	2
(20)	UE.2166	Setscrew, head, long	29	(51)	K.9006/Z	Washer, spring, nut	2
(21)	UE.2167	Setscrew, head, short	10	(52)	K.4404/Z	Washer, plain, nut	2
(22)	UE.720	Washer, setscrew	39	(53)	RE.14770	Clip, H.T. lead	1
(23)	UE.360	<b>ROCKER COVER ASSEMBLY</b>	1	(54)	K.4006/Z	Nut, clip	1
(24)	UE.363	Insert, breather	1	(55)	K.9006/Z	Washer, clip	1
(25)	UA.853/Z	Stud, oil filter adaptor	2	(56)	UE.2303	Joint, inlet face	1
(26)	UA.1401/Z	Stud, clip	1	(57)	UA.301/Z	Nut, stud, inlet face	20
(27)	UA.851/Z	Stud, ignition tube	2	(58)	K.9008/Z	Washer, nut	20
(28)	EB.3998	Bush, cover studs	3	(59)	RE.15203	Joint, hotspot	1
(29)	RE.14060	Backing plate, bush	3	(60)	UA.301/Z	Nut, hotspot, face	2
				(61)	K.9008/Z	Washer, hotspot face	2
				(62)	UA.301/Z	Nut, ignition wire tubes	2
				(63)	K.9008/Z	Washer, ignition wire tubes	2
				(64)	UE.5053	Gasket, cylinder head	1

## CYLINDER HEAD



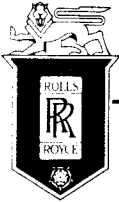
# SPARES schedule

SILVER CLOUD AND BENTLEY 'S' TYPE



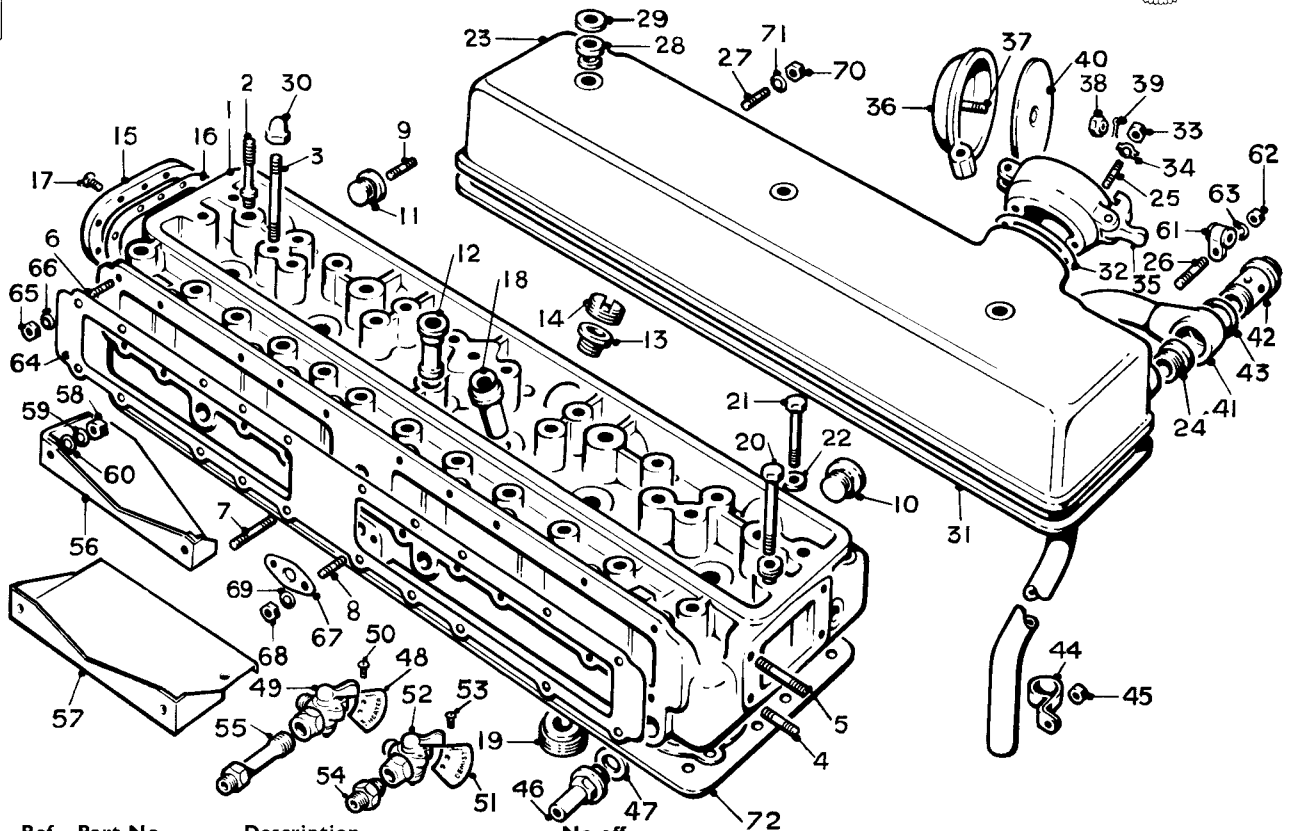
Ref.	Part No.	Description	No off	Ref.	Part No.	Description	No off
	<b>UE.3828</b>	<b>CYLINDER HEAD ASSY.</b>	<b>1</b>	(30)	RE.14062	Dome nut, cover	3
		(8.0 : 1 compression)		(31)	UE.379	Joint, cover	1
(1)	UE.3764	Cylinder head	1	(32)	RE.11319	Joint, adaptor, filler cap	1
(2)	UE.358	Stud, rocker pedestal	5	(33)	UA.301/Z	Nut, adaptor	1
(3)	UA.922/R	Stud, rocker cover	3	(34)	KB.7106	Tab washer, adaptor	1
(4)	UA.905/R	Stud, 1.625", thermostat	2		<b>RE.15934S/A</b>	<b>OIL FILLER ADAPTOR &amp; CAP</b>	
(5)	UA.909/R	Stud, 2.125", thermostat	2	(35)	RE.11318	Adaptor	1
(6)	UA.856/Z	Stud, 1.625", inlet facing	18	(36)	RE.15934	Cap and stud	1
(7)	UA.861/Z	Stud, 2.250", inlet facing	2	(37)	RE.10854	Stud, cap	1
(8)	UA.858/Z	Stud, hotspot	2	(38)	RE.10853	Nut, stud	1
(9)	UA.1603/Z	Stud, core plug	2	(39)	K.4648/Z	Split, pin, nut	1
(10)	RE.9033	Core plug	6	(40)	RE.15879	Washer assembly, cork	1
(11)	RE.10422	Core plug, Nos. 4 & 6	2	(41)	UE.1306	Adaptor, feed, heater and demister	2
	UA.3101/Z	Plug, oil drilling	1	(42)	RE.5007	Washer, adaptor	2
(12)	UE.350	Bush centre	1	(43)	UE.764	<b>BREATHER PIPE ASSEMBLY</b>	
(13)	RE.3682	Adaptor, spark plug	6		UE.766	Connection	1
(14)	RE.3681	Ring, lock, adaptor	6	(44)	UE.767	Bolt, breather connection	1
(15)	EB.4002	Cover, rear end	1	(45)	KB.1092	Washer, bolt	1
(16)	RE.3422	Joint, cover	1	(46)	RE.5467	Clip, breather pipe	1
(17)	K.2813/Z	Screw, cover	10	(47)	UA.351/Z	Nut, clip	1
(18)	RE.361	Guide, inlet valve	6	(48)	K.9008/Z	Washer, clip	1
	RE.14507	Guide, inlet valve, .002" O/S	6	(49)	UE.658	Heat-shield	1
(19)	UE.3807	Seating, inlet valve	6	(50)	K.4307/Z	Nut, stud, heat-shield	2
(20)	UE.2166	Setscrew, head, long	29	(51)	K.9006/Z	Washer, spring, nut	2
(21)	UE.2167	Setscrew, head, short	10	(52)	K.4404/Z	Washer, plain, nut	2
(22)	UE.4328	Washer, setscrew	39	(53)	RE.14770	Clip, H.T. lead	1
(23)	UE.360	<b>ROCKER COVER ASSEMBLY</b>	<b>1</b>	(54)	K.4006/Z	Nut, clip	1
		(Bentley cars)		(55)	K.9006/Z	Washer, clip	1
	<b>UE.2747</b>	<b>ROCKER COVER ASSEMBLY</b>	<b>1</b>	(56)	UE.2303	Joint, inlet face	1
		(R.R. cars)		(57)	UA.301/Z	Nut, stud, inlet face	20
(24)	UE.363	Insert, breather	1	(58)	K.9008/Z	Washer, nut	20
(25)	UA.853/Z	Stud, oil filter adaptor	2	(59)	RE.15203	Joint, hotspot	1
(26)	UA.1401/Z	Stud, clip	1	(60)	UA.301/Z	Nut, hotspot, face	2
(27)	UA.851/Z	Stud, ignition tube	2	(61)	K.9008/Z	Washer, hotspot face	2
(28)	EB.3998	Bush, cover studs	3	(62)	UA.301/Z	Nut, ignition wire tubes	2
(29)	RE.14060	Backing plate, bush	3	(63)	K.9008/Z	Washer, ignition wire tubes	2
				(64)	UE.5053	Gasket, cylinder head	1

## CYLINDER HEAD



# SPARES schedule

SILVER CLOUD AND BENTLEY 'S' TYPE

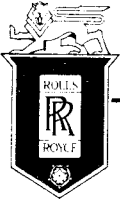


Ref.	Part No.	Description	No off
	UE.3345	<b>CYLINDER HEAD ASSY.</b> (8:0:1 Compression)	1
(1)	UE.3764	Cylinder head	1
(2)	UE.358	Stud, rocker pedestal	5
(3)	UA.922/R	Stud, rocker cover	3
(4)	UA.905/R	Stud, 1.625", thermostat	2
(5)	UA.909/R	Stud, 2.125", thermostat	2
(6)	UA.856/Z	Stud, 1.625", inlet facing	18
(7)	UA.861/Z	Stud, 2.250", inlet facing	2
(8)	UA.858/Z	Stud, hotspot	2
(9)	UA.1603/Z	Stud, core plug	2
(10)	RE.9033	Core plug	6
(11)	RE.10422	Core plug, Nos. 4 & 6	2
	UA.3101/Z	Plug, oil drilling	1
(12)	UE.350	Bush centre	1
(13)	RE.3682	Adaptor, spark plug	6
(14)	RE.3681	Ring, lock, adaptor	6
(15)	EB.4002	Cover, rear end	1
(16)	RE.3422	Joint, cover	1
(17)	K.2813/Z	Screw, cover	10
(18)	RE.361	Guide, inlet valve	6
	RE.14507	Guide, inlet valve, .002" O/S	6
(19)	UE.3807	Seating, inlet valve	6
(20)	UE.2166	Setscrew, head, long	29
(21)	UE.2167	Setscrew, head, short	10
(22)	UE.720	Washer, setscrew	39
(23)	UE.360	<b>ROCKER COVER ASSEMBLY</b>	1
	UE.2747	<b>ROCKER COVER ASSEMBLY</b> (Bentley cars)	1
		(R.R. cars)	
(24)	UE.363	Insert, breather	1
(25)	UA.853/Z	Stud, oil filter adaptor	2
(26)	UA.1401/Z	Stud, clip	1
(27)	UA.851/Z	Stud, ignition tube	2
(28)	EB.3998	Bush, cover studs	3
(29)	RE.14060	Backing plate, bush	3
(30)	RE.14062	Dome nut, cover	3
(31)	UE.379	Joint, cover	1
(32)	RE.11319	Joint, adaptor, filler cap	1
(33)	UA.301/Z	Nut, adaptor	1
(34)	KB.7106	Tab washer, adaptor	1

## CYLINDER HEAD

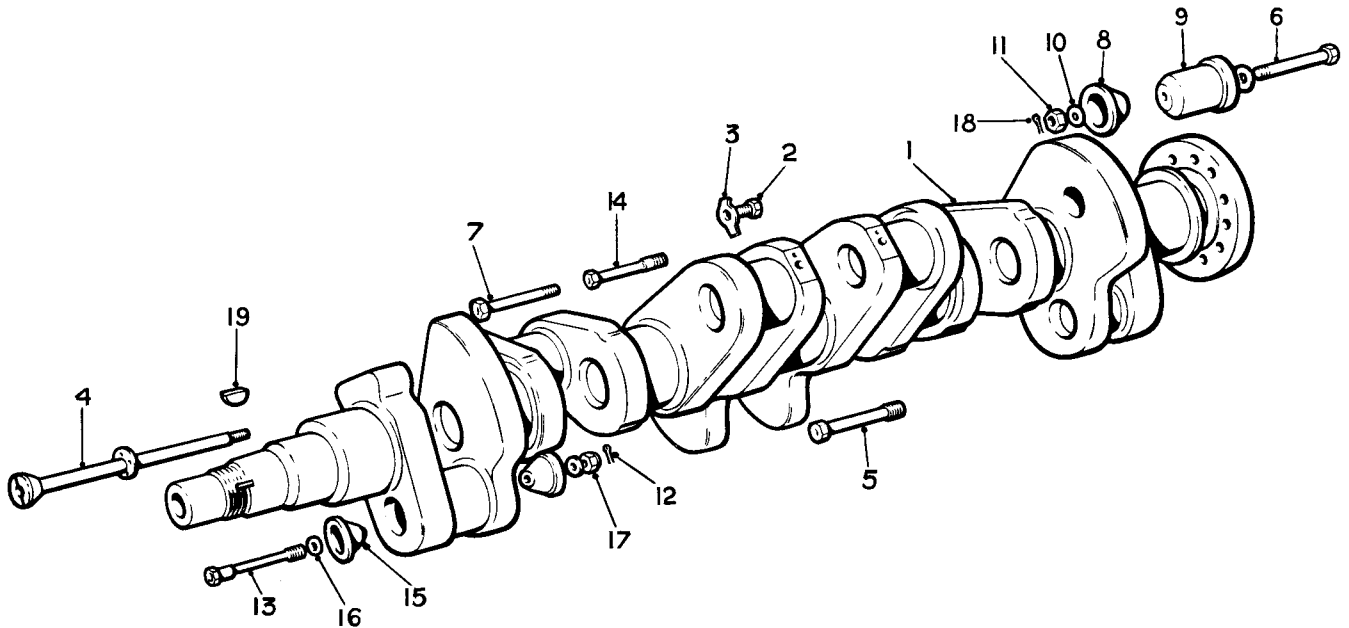
(WITH DEMISTER AND HEATER TAPS)

Ref.	Part No.	Description	No off
	RE.15934S/A	<b>OIL FILLER ADAPTOR &amp; CAP</b>	1
(35)	RE.11318	Adaptor	1
(36)	RE.15934	Cap and stud	1
(37)	RE.10854	Stud, cap	1
(38)	RE.10853	Nut, stud	1
(39)	K.4648/Z	Split, pin, nut	1
(40)	RE.15879	Washer assembly, cork	1
(41)	UE.764	<b>BREATHER PIPE ASSEMBLY</b>	1
	UE.766	Connection	1
(42)	UE.767	Bolt, connection	1
(43)	KB.1092	Washer, bolt	1
(44)	RE.5467	Clip, pipe	1
(45)	UA.351/Z	Nut, clip	1
(46)	UE.1306	Adaptor, pipes, heater and demist.	2
(47)	RE.5007	Washer, adaptor	2
	UD.3984	<b>WATER TAP, HEATER ASSY.</b>	1
(48)	UD.3982	Plate, indicator	1
(49)	UD.3976	Tap	1
(50)	K.1708/Z	Screw	1
	UD.3985	<b>WATER TAP, DEMIST, ASSY.</b>	1
(51)	UD.3983	Plate, indicator	1
(52)	UD.3977	Tap	1
(53)	K.1708/Z	Screw	1
(54)	KB.5131/Z	Union, tap	2
(55)	UE.3439	Extension, heater, tap	1
		("Continental" only)	
(56)	UE.3339	Heat shield, pipes	1
(57)	UE.3451	Heat shield, pipes	1
(58)	K.4307/Z	Nut, heat shield	2
(59)	K.9006/Z	Washer, spring, nut	2
(60)	K.4404/Z	Washer, plain, nut	2
(61)	RE.14770	Clip, H.T. lead	1
(62)	K.4006/Z	Nut, clip	1
(63)	K.9006/Z	Washer, nut	1
(64)	UE.2303	Joint, cover, inlet face.	1
(65)	UA.301/Z	Nut, cover	20
(66)	K.9008/Z	Washer, nut	20
(67)	RE.15203	Joint, hotspot face	1
(68)	UA.301/Z	Nut, hotspot	2
(69)	K.9008/Z	Washer, nut	2
(70)	UA.301/Z	Nut, ignition wire tube	2
(71)	K.9008/Z	Washer, nut	2
(72)	UE.5053	Gasket, cylinder head	1



# SPARES schedule

SILVER CLOUD AND BENTLEY 'S' TYPE

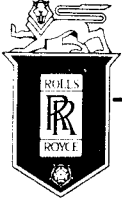


Ref.	Part No.	Description	No off
(1)	UE.305	Crankshaft	1
(2)	UA.101/Z	Blanking plug	6
(3)	KB.7106	Tab, washer, plug	6
(4)	UE.308	Stud, oil cap, front journal	1
(5)	RE.19004	Stud, oil cap, centre journal	1
(6)	UE.415	Stud, oil cap, rear journal	1
(7)	RE.19002	Stud, oil cap, inter. journal	4
(8)	RE.14142	Cap, oils, journals	12
(9)	RE.13449	Cap, oil, rear journal	1
(10)	KB.1076	Washer, caps	13
(11)	UA.1101/Z	Nut, studs	7
(12)	K.4602/Z	Split, pin, studs	7
(13)	RE.11629	Stud, oil cap, 1 & 6 pins	2
(14)	RE.9443	Stud, oil cap, 2, 3, 4 & 5 pins	4
(15)	RE.14143	Cap, oil, crankpin	12
(16)	RE.6976	Washer, cap	17
(17)	K.4206/Z	Nut, studs	6
(18)	K.4602/Z	Split, pin studs	6
(19)	KC.505	Woodruff Key, .125"	3
	KC.506	Woodruff Key, .1255"	3
	KC.507	Woodruff Key, .126"	3
	KC.508	Woodruff Key, .1265"	3

Alt.

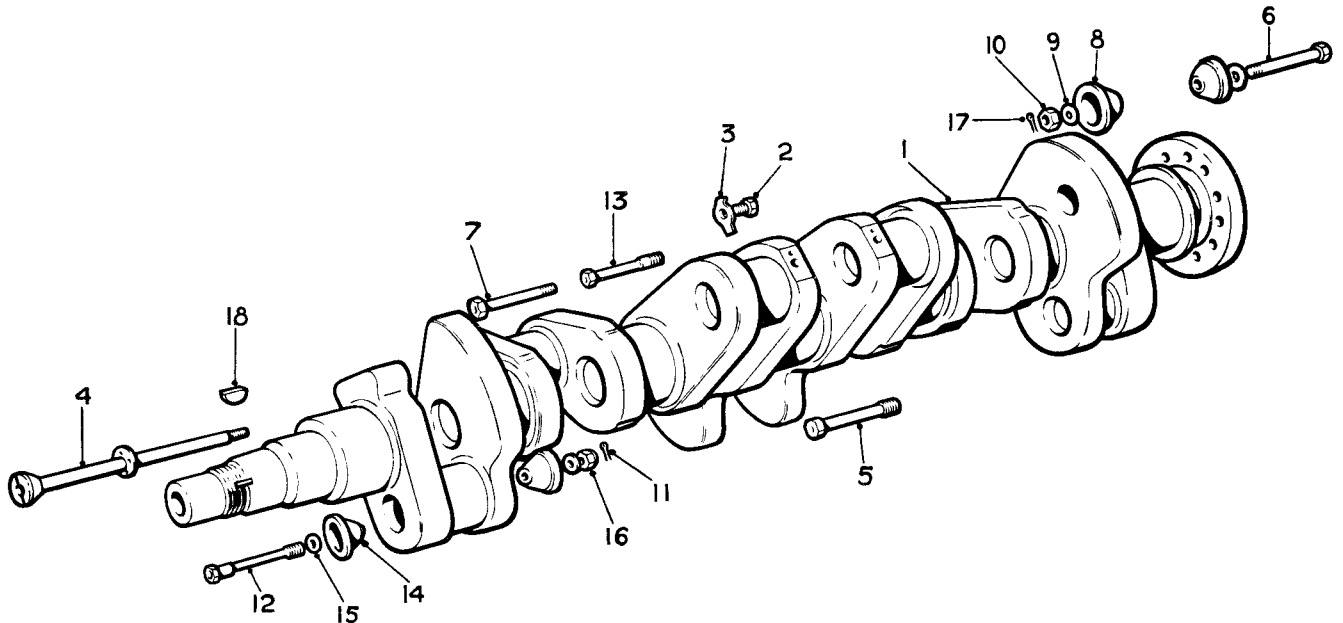
## CRANKSHAFT

(Part Assembly RH.278  
For Automatic Gearbox cars only)



# SPARES schedule

SILVER CLOUD AND BENTLEY 'S' TYPE

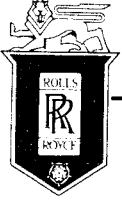


Ref.	Part No.	Description	No off
(1)	UE.305	Crankshaft	1
(2)	UA.101/Z	Blanking plug	6
(3)	KB.7106	Tab washer	6
(4)	UE.308	Stud, oil cap, front journal	1
(5)	RE.19004	Stud, oil cap, centre journal	1
(6)	RE.19003	Stud, oil cap, rear journal	1
(7)	RE.19002	Stud, oil cap, inter journals	4
(8)	RE.14142	Cap, oil, journals	13
(9)	KB.1076	Washer, caps	13
(10)	UA.1101/Z	Nut, studs	7
(11)	K.4602/Z	Split, pin studs	7
(12)	RE.11629	Stud, oil cap, 1 & 6 pins	2
(13)	RE.9443	Stud, oil cap, 2, 3, 4 & 5 pins	4
(14)	RE.14143	Cap, oil, crankpin	12
(15)	RE.6976	Washer, cap	17
(16)	K.4206/Z	Nut, studs	6
(17)	K.4602/Z	Split pin	6
(18)	KC.505	Woodruff Key, .125"	3
	KC.506	Woodruff Key, .1255"	3
	KC.507	Woodruff Key, .126"	3
	KC.508	Woodruff Key, .1265"	3

} Alt.

## CRANKSHAFT

(Part Assembly RH.279  
For Synchromesh Gearbox cars only)

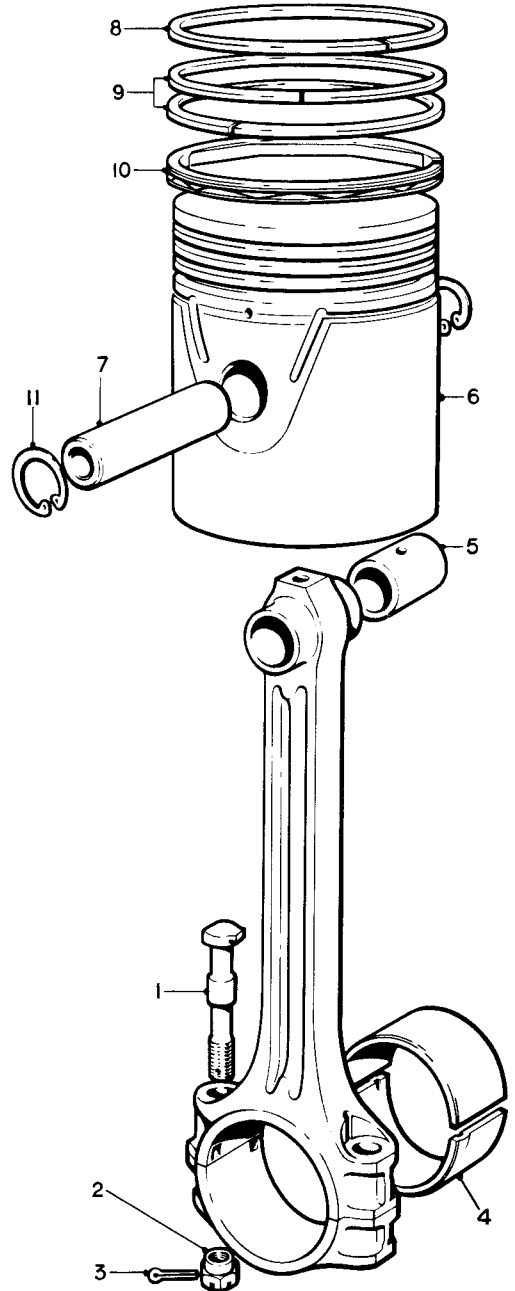


# SPARES schedule

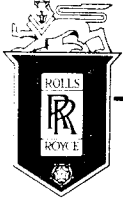
SILVER CLOUD AND BENTLEY 'S' TYPE



Part No.	Description	No off	
RE.22447	<b>CONNECTING ROD ASSEMBLY</b>	6	
(1) RE.13414	Bolt, standard	2	} Alt
RE.17708	Bolt, .002 in. O/S	2	
RE.17705	Bolt, .004 in. O/S	2	
(2) RE.14185	Nut	2	
(3) E.84689	Split, pin, bolt	12	
(4) RE.3236	Bush, large end, standard	6	} Alt
RE.15121	Bush, large end, .020 in. U/S	6	
RE.19999	Bush, large end, .030 in. U/S	6	
(5) EB.5211	Bush, small end	6	
UE.2965	<b>PISTON ASSEMBLY, STANDARD</b>	6	
(6) UE.2955	Piston	1	
(7) UE.2975	Gudgeon pin	1	
(8) RE.20500	Compression ring	1	
(9) RE.20510	Centre ring	2	
(10) RE.20692	Scraper ring	1	
(11) KB.14013/L	Circlip, gudgeon pin	2	
UE.2697	<b>PISTON ASSEMBLY, .010 in. O/S</b>	6	
	as standard except :-		
UE.2957	Piston	1	
RE.20502	Compression ring	1	
RE.20512	Centre ring	2	
UE.2968	<b>PISTON ASSEMBLY, .015 in. O/S</b>	6	
	as standard except :-		
UE.2958	Piston	1	
RE.20503	Compression ring	1	
RE.20513	Centre ring	2	
UE.2970	<b>PISTON ASSEMBLY, .025 in. O/S</b>	6	
	as standard except :-		
UE.2960	Piston	1	
RE.20505	Compression ring	1	
RE.20515	Centre ring	2	
RE.20696	Scraper ring	1	
UE.2972	<b>PISTON ASSEMBLY, .035 in. O/S</b>	6	
	as standard except :-		
UE.2962	Piston	1	
RE.20507	Compression ring	1	
RE.20517	Centre ring	2	
RE.20696	Scraper ring	1	

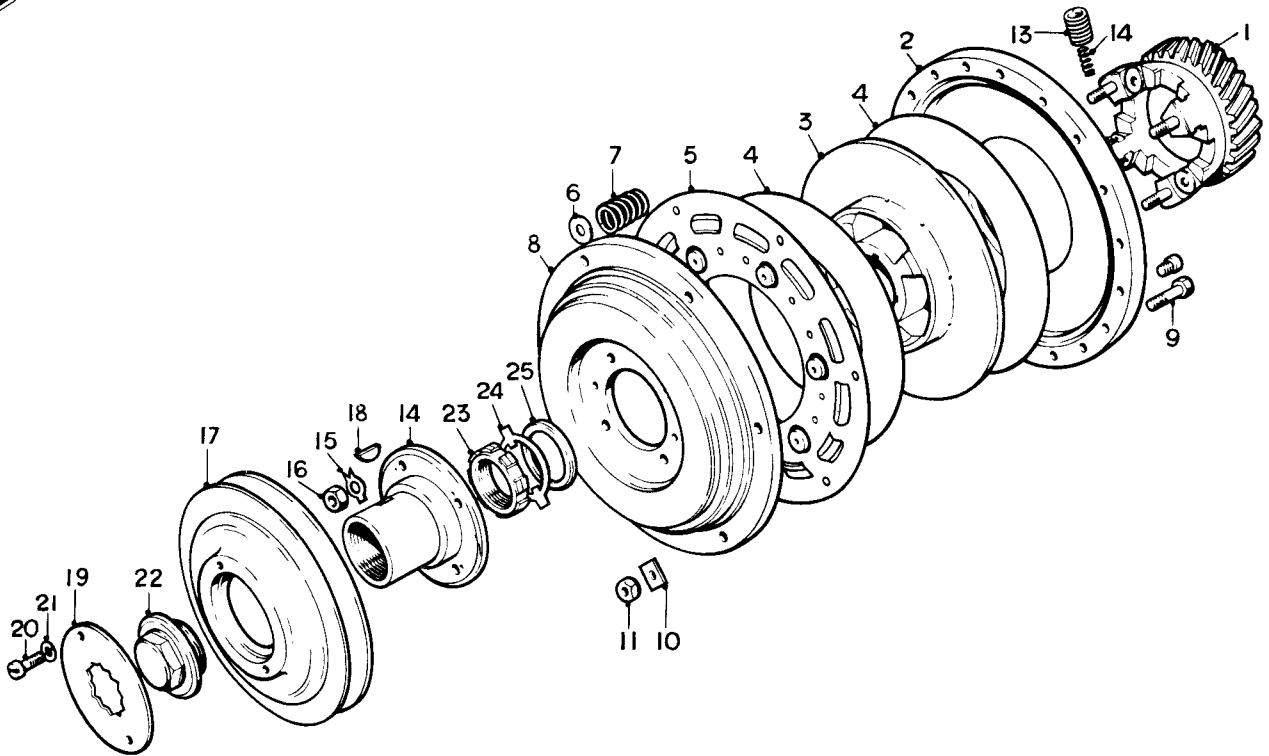


CONNECTING RODS AND PISTONS



# SPARES schedule

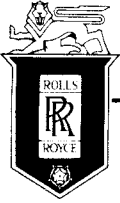
SILVER CLOUD AND BENTLEY 'S' TYPE



Ref.	Part No.	Description	No off	Ref.	Part No.	Description	No off
	UE.281	<b>SPRING DRIVE ASSEMBLY</b>	1	(12)	E.57758	Spring, inner	8
(1)	UE.274 S/A	Pinion Assembly	1	(13)	E.58239	Spring, outer	8
	RE.3936	Bearing	1	(14)	UE.275 S/A	Hub and Bearing Assembly	1
	UA.703/Z	Stud	4		RE.3937	Bearing	1
(2)	UE.280	Rear Damper Wheel	1	(15)	KB.7106	Tabwasher, pinion stud	4
	RE.21286	Screw, Allen, .500"	] Alt. for balancing	(16)	UA.351/Z	Nut, pinion stud	4
	RE.21287	Screw, Allen, .250"		(17)	UE.5097	Pulley, fan	1
(3)	RE.6714	Friction drum	1		UE.5095	Pulley, fan	1 Cars with P.A.S.
(4)	EW.935	Friction washer	2		UE.5098	Pulley, fan	1 Cars with interior cooling system
(5)	RE.3941 S/A	Presser Plate Assembly	1	(18)	KC.505	Key, Woodruff .125"	1
	RE.3941	Presser plate	1		KC.506	Key, Woodruff .1255"	As
	RE.3942	Spring plate	1		KC.507	Key, Woodruff .126"	req.
	RE.3944	Spigot	6		KC.508	Key, Woodruff .1265"	
	KB.1854	Rivet	12	(19)	RE.4034	Lock plate	1
	KB.1866	Rivet	6	(20)	UA-2102/Z	Screw, lockplate	2
(6)	KB.8808/Z	Washer, damper springs	as req.	(21)	K.9008/Z	Washer, screw	2
(7)	RE.3943	Spring, damper	6	(22)	UE.276	Nut, crankshaft pulley	1
(8)	RE.4030	Front damper wheel	1	(23)	UE.279	Nut, crankshaft	1
(9)	UE.312	Bolt, damper wheel	6	(24)	UE.277	Lockwasher, crankshaft nut	1
(10)	RE.3947	Lockwasher, bolt	6	(25)	UE.278	Washer, crankshaft nut	1
(11)	UA.351/Z	Nut, bolt	6				

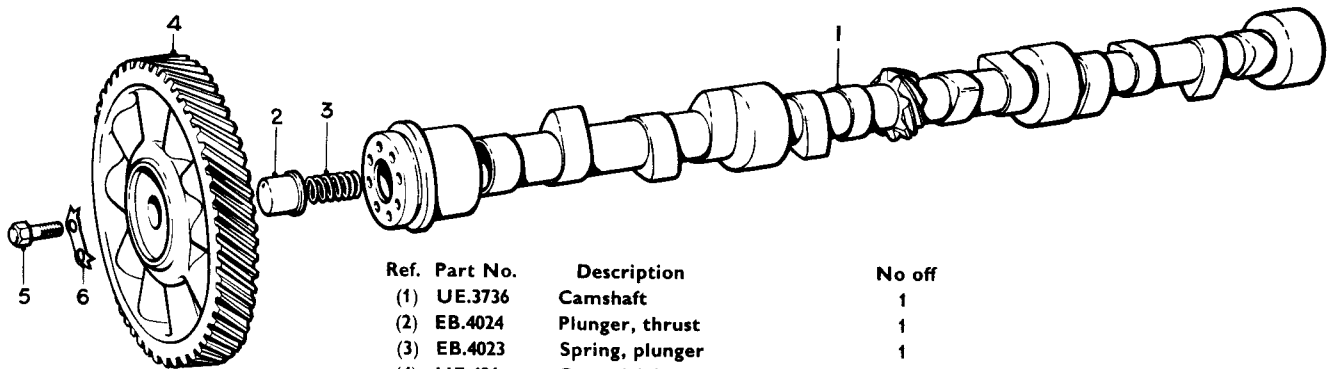
## SPRING DRIVE ASSEMBLY

(Part Assembly RH.278  
Part Assembly RH.279)



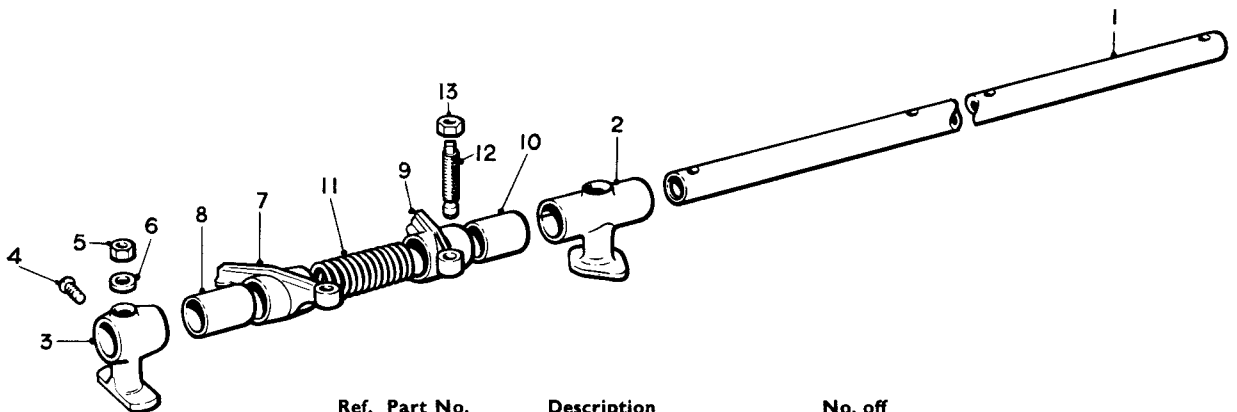
# SPARES schedule

SILVER CLOUD AND BENTLEY 'S' TYPE



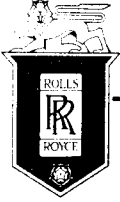
Ref.	Part No.	Description	No. off
(1)	UE.3736	Camshaft	1
(2)	EB.4024	Plunger, thrust	1
(3)	EB.4023	Spring, plunger	1
(4)	UE.486	Gear, driving	1 — Supplied with UE.274 S/A
(5)	RE.13994	Screw, gear retaining	8
(6)	RE.9348	Washer, lock, screw	4

## CAMSHAFT



Ref.	Part No.	Description	No. off
(1)	RE.14862	ROCKER SHAFT ASSEMBLY	1
(2)	RE.14397	Pedestal, centre	1
(3)	RE.14396	Pedestal, inner and outer	4
(4)	K.2701/Z	Screw, 3 BA, front pedestal	1
(5)	UA.302/Z	Nut, pedestal stud	5
(6)	E.50051	Washer, pedestal nut	5
(7)	RE.13982	ROCKER ARM ASSEMBLY, R.H.	3
(8)	RE.14388	Bush	1
(9)	RE.13983	ROCKER ARM ASSEMBLY, L.H.	3
(10)	RE.14388	Bush	1
(11)	RE.13536	Spring, rocker shaft	4
(12)	RE.13986	Screw, adjusting inlet tappet	6
(13)	UA.302/Z	Nut, lock, screw	6

## ROCKER SHAFT

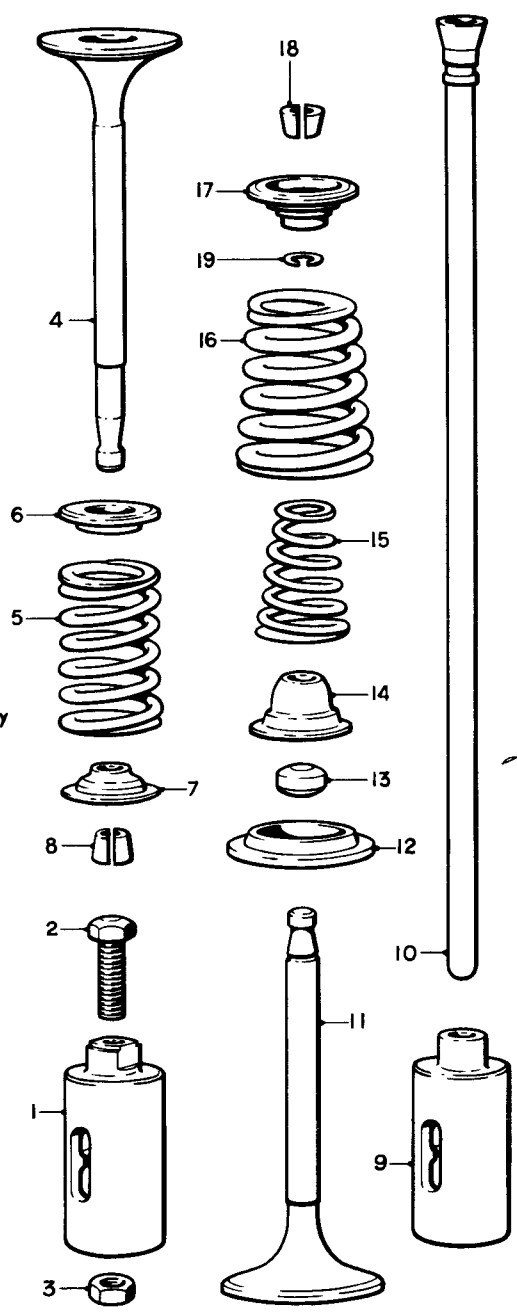


# SPARES schedule

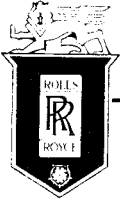
SILVER CLOUD AND BENTLEY 'S' TYPE



Ref.	Part No.	Description	No off
(1)	UE.395	Tappet, exhaust, 1.18675 in. dia.	6
	UE.396	Tappet, exhaust, 1.1870 in. dia.	6
	UE.397	Tappet, exhaust, 1.18725 in. dia.	6
	UE.398	Tappet, exhaust, 1.1875 in. dia.	6
	UE.399	Tappet, exhaust, 1.18775 in. dia.	6
	UE.400	Tappet, exhaust, 1.1880 in. dia.	6
(2)	RE.14040	Screw, adjusting exhaust tappet	6
(3)	UA.302/Z	Nut, lock, screw	6
(4)	UE.786	Valve, exhaust	6
(5)	RE.15959	Spring, exhaust valve	6
(6)	RE.975	Washer, top, spring	6
(7)	RE.15960	Washer, bottom, spring	6
(8)	EB.1748	Wedge, retaining	6
(9)	RE.15164	Tappet, inlet, 1.18675 in. dia.	6
	RE.15165	Tappet, inlet, 1.1870 in. dia.	6
	RE.15166	Tappet, inlet, 1.18725 in. dia.	6
	RE.15167	Tappet, inlet, 1.1875 in. dia.	6
	RE.15168	Tappet, inlet, 1.18775 in. dia.	6
	RE.15169	Tappet, inlet, 1.1880 in. dia.	6
(10)	RE.24053	Push rod	6 — "Continental" only
	RE.24056	Push rod	6
(11)	EB.3853	Valve, inlet	6
	RE.22359	Valve, inlet	6 — 8 : 1 Compression
(12)	RE.3900	Washer, valve spring, outer	6
(13)	EB.1886	Packing, valve stem	6
(14)	RE.3679	Washer, valve spring, inner	6
(15)	RE.6793	Spring, inner	6
(16)	RE.6794	Spring, outer	6
(17)	E.86941	Washer, valve spring, top	6
(18)	EB.1748	Wedge, retaining	6
(19)	EB.1747	Spring ring, valve	6

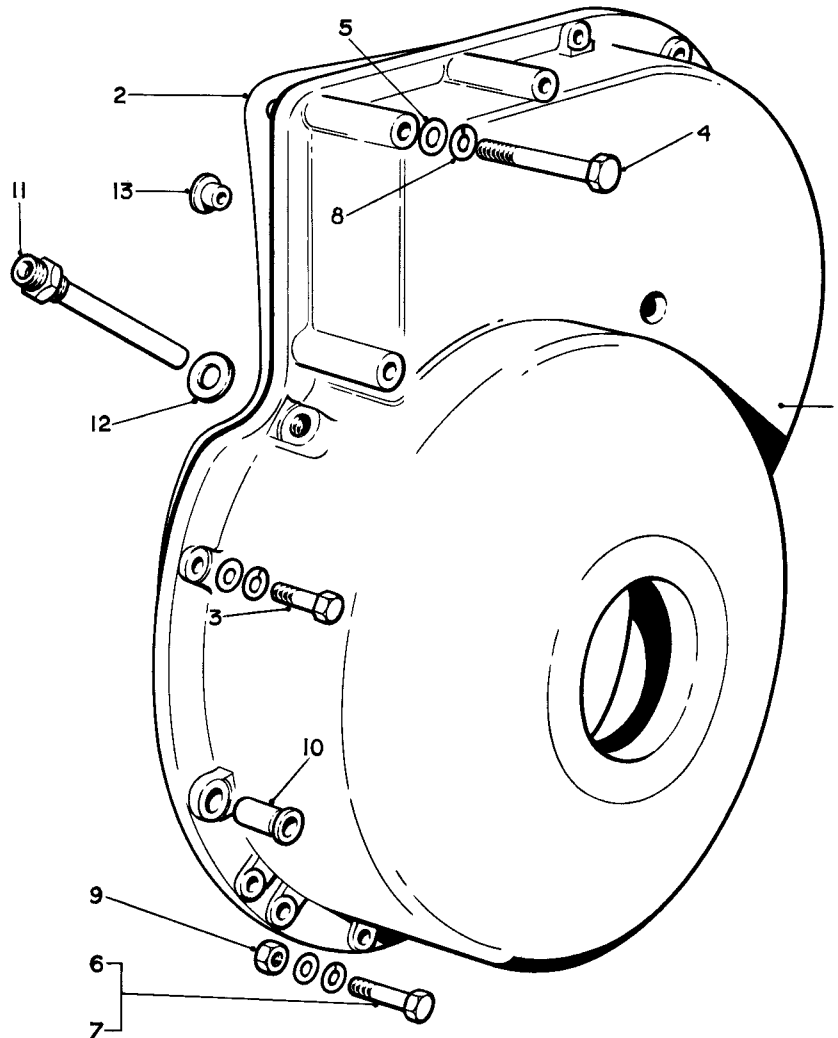


## VALVE MECHANISM



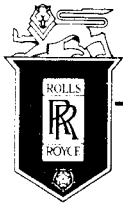
# SPARES schedule

SILVER CLOUD AND BENTLEY 'S' TYPE



Ref.	Part No.	Description	No off
(1)	UE.265	Wheelcase	1
(2)	UE.416	Joint, wheelcase to crankcase	1
(3)	UA.104/Z	Setscrew, .250 in. x .750 in.	9
(4)	UE.2512	Setscrew	3
(5)	K.9009/Z	Washer, setscrew,	3
(6)	UA.109Z	Setscrew, .250 in. x 1.375 in.	2
(7)	UA.107/Z	Setscrew, .250 in. x 1.125 in.	2
(8)	K9008/Z	Washer, spring	14
(9)	UA.301/Z	Nut	2
(10)	UE.266	Dowel	2
(11)	UE.268	Nozzle, oil	1
(12)	KB.1079	Washer, nozzle	1
(13)	RE.8194	Thrust button, camshaft	1

## WHEELCASE

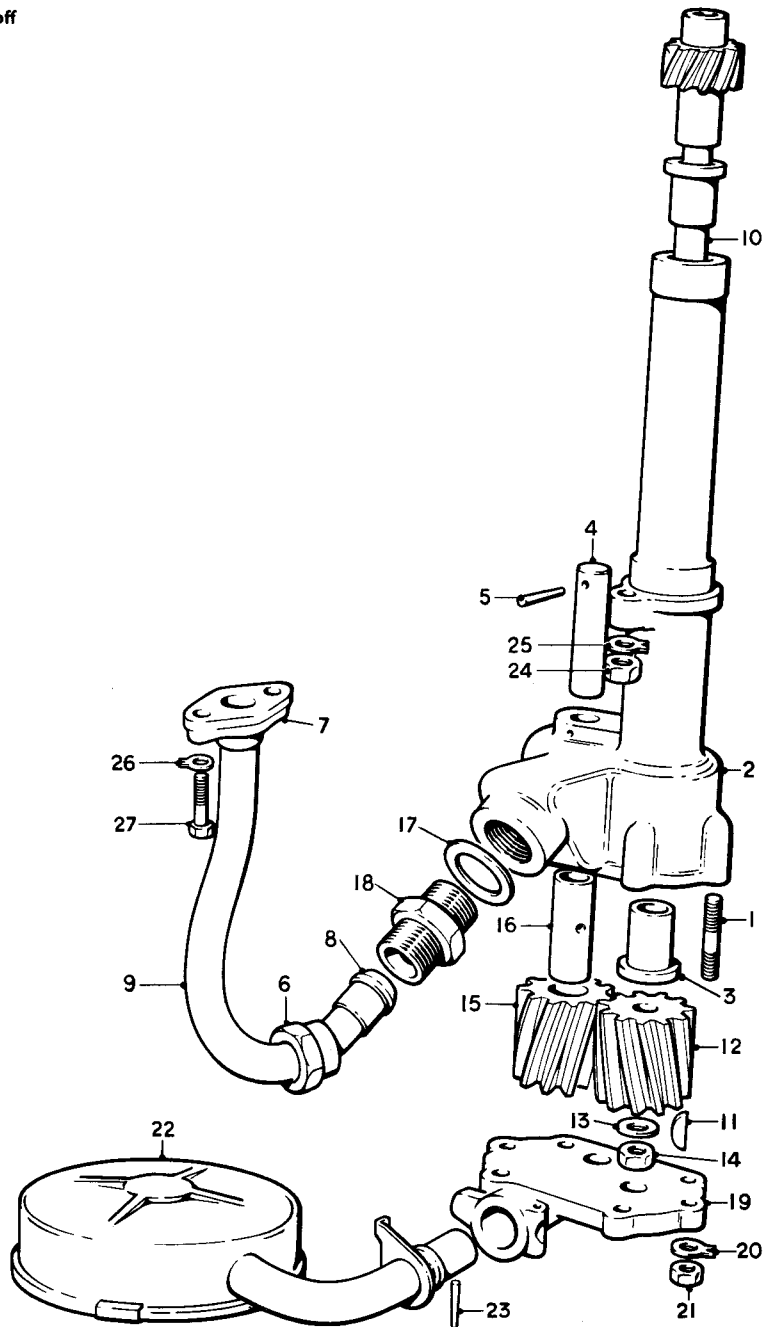


# SPARES schedule

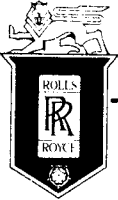
SILVER CLOUD AND BENTLEY 'S' TYPE



Ref.	Part No.	Description	No off
	UE.289	OIL PUMP ASSEMBLY	1
	UE.288	CASING ASSEMBLY	1
(1)	U.A.853/Z	Stud, Cover	6
(2)	UE.283	Casing	1
(3)	EB.3905	Bush, shaft	2
(4)	EB.3906	Spindle, driven gear	1
(5)	K.4170	Pin, taper, spindle	1
	UE.287	OIL FEED PIPE ASSEMBLY	1
(6)	RE.6235	Adaptor	1
(7)	EB.3902	Flange	1
(8)	RE.6238	Nipple	1
(9)	UE.286	Pipe	1
(10)	UE.285	Shaft, driving	1
(11)	KC.501	Key, Woodruff	1
(12)	EB.3898	Gear, driving	1
(13)	K.4110/Z	Washer, shaft	1
(14)	UA.352/Z	Nut, shaft	1
(15)	RE.20968	Gear, driven	1
(16)	RE.20967	Bush, driven gear	1
(17)	RE.16378	Washer, union	1
(18)	RE.6241	Union, oil pipe	1
(19)	UE.284	Cover	1
(20)	KB.7106	Washer, lock, stud	6
(21)	UA.351/Z	Nut, stud	6
(22)	UE.2582	Float	1
(23)	K.4802	Pin, taper, float	1
(24)	UA.302/Z	Nut, pump to crankcase	1
(25)	KB.7107/R	Washer, lock, nut	1
(26)	UA.105/Z	Screw, pipe flange	2
(27)	KB.7106/R	Washer, lock, screw	2



ENGINE OIL PUMP

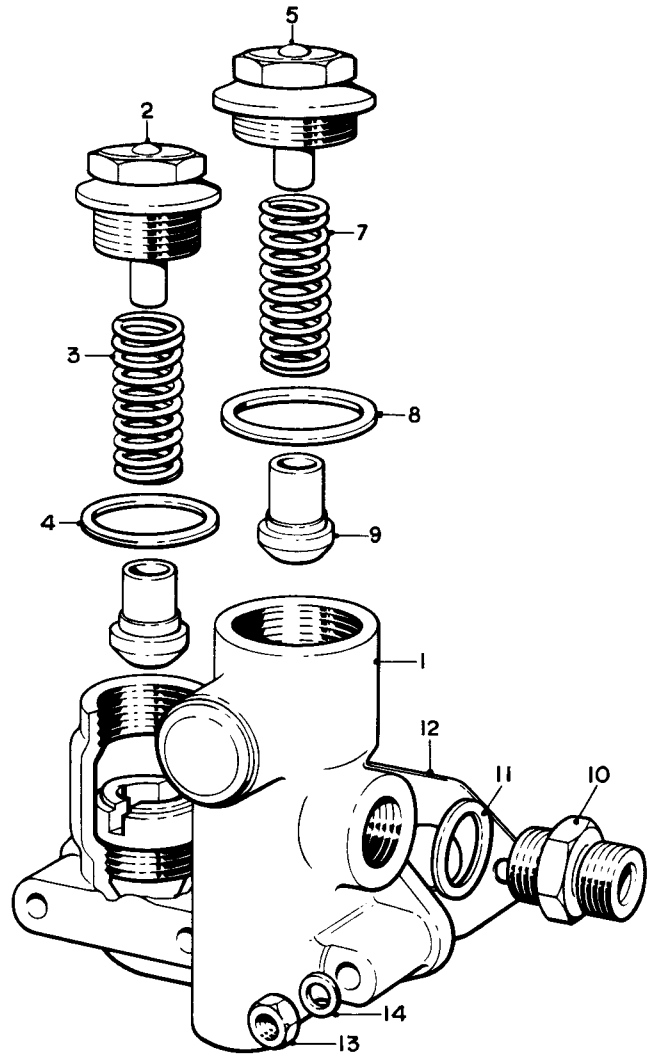


# SPARES schedule

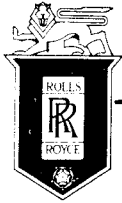
SILVER CLOUD AND BENTLEY 'S' TYPE



Ref.	Part No.	Description	No off
	RE.14284	RELIEF VALVE ASSEMBLY	1
(1)	RE.16848	CASING ASSEMBLY	1
	RE.16847	Casing	1
	RE.16801	Core plug	1
	RE.14082	Seating, low pressure	1
	RE.14081	Seating, high pressure	1
(2)	RE.14083	VALVE CAP, H.P. ASSEMBLY	1
	RE.14084	Cap	1
	RE.11044	Guide pin	1
(3)	EB.5029	Spring	1
(4)	KB.1092	Washer, H.P. Cap	1
(5)	RE.14085	VALVE CAP, L.P. ASSEMBLY	1
	RE.14086	Cap	1
	RE.11045	Guide pin	1
(7)	EW.1542	Spring	1
(8)	KB.1093	Washer, L.P. Cap	1
(9)	E.87823	Plunger, valve	2
(10)	RE.16815	Union, L.P. feed	1
(11)	RE.16376	Washer, union	1
(12)	RE.5762	Joint, valve to crankcase	1
(13)	UA.301/Z	Nut, relief valve retaining	3
(14)	K.9008/Z	Washer, nut	3



## RELIEF VALVE

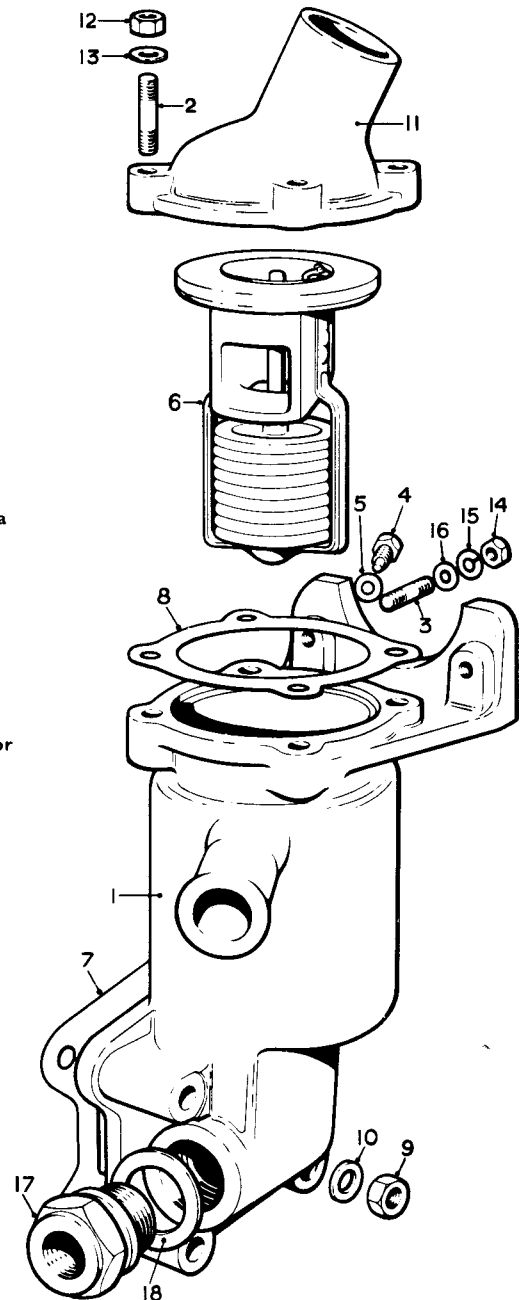


# SPARES schedule

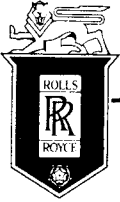
SILVER CLOUD AND BENTLEY 'S' TYPE



(1) Part No.	Description	No off
(2) UE.331	Casing, thermostat	1
(3) UA.854/Z	Stud, outlet connection	4
(4) UA.851/Z	Stud, Coil	2
(5) RE.14180	Screw, locating thermostat	1
(6) RE.14181	Washer, screw	1
UE.3531	Thermostat unit, standard	1
RE.22618	Thermostat unit, " Summer "	1 For N. America
RE.22619	Thermostat unit, " Winter "	1 For N. America
UE.4518	Thermostat unit, " Summer "	1 For interior cooled cars
UE.4519	Thermostat unit, " Winter "	1 domiciled in N. America
UE.4194	Thermostat unit, " Summer "	1 For interior cooled cars not domiciled in N. America
(7) UE.349	Joint, casing to cylinder head	1
(8) EB.3952	Joint, outlet connection	1
(9) UA.352/Z	Nut, retaining casing	4
(10) K.9009/Z	Washer, nut	4
(11) UE.2640	Outlet connection	1 Not " Continental "
UE.3004	Outlet connection	1 " Continental " standard
UE.3404	Outlet connection	1 " Continental " with interior cooling
(12) UA.301/Z	Nut, outlet connection	4
(13) K.9008/Z	Washer, nut	4
(14) UA.301/Z	Nut, coil attachment	2
(15) K.9008/Z	Washer, spring, nut	2
(16) UA.1251/Z	Washer, plain, nut	2
(17) UE.846	Union, thermometer	1
(18) KB.1092	Washer, union	1



## THERMOSTAT AND CASING

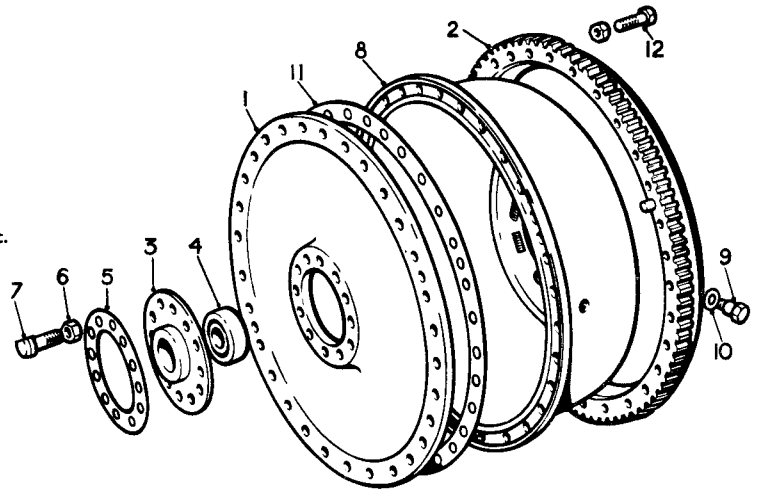


# SPARES schedule

SILVER CLOUD AND BENTLEY 'S' TYPE

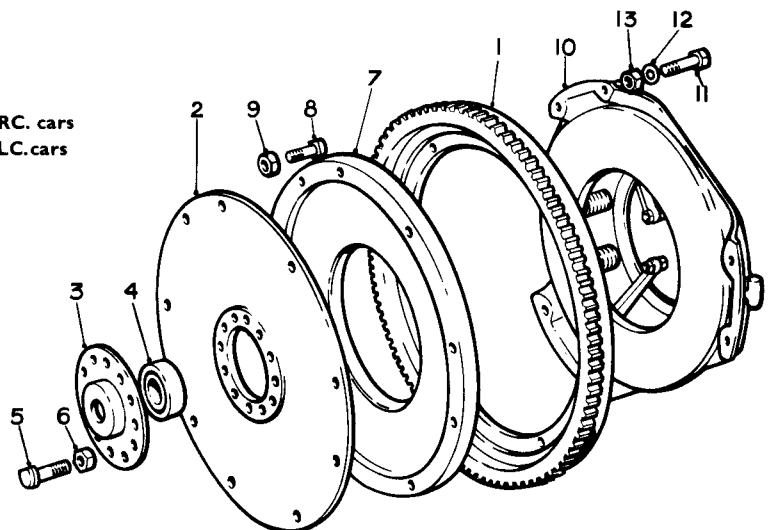


Ref.	Part No.	Description	No off
(1)	UE.1721	Flywheel	1
(2)	UG.1502	INERTIA RING ASSEMBLY	1
	UG.1498	Ring	1
	UG.2895	Dowel	1
	UG.1499	Dowel	1
(3)	RE.13448	Housing, bearing, flywheel	1
(4)	RE.22518	Bearing, flywheel	1
	RE.13183	Bearing, flywheel	1
	RE.13184	Bearing, flywheel	1
(5)	RE.13189	Joint, crankshaft to flywheel	1
(6)	UE.294	Bolt, flywheel	12
(7)	RE.22428	Nut, bolt	12
(8)	UG.1501	TORUS COVER ASSEMBLY	1
(9)	UG.1313	Plug, torus cover	1
(10)	UG.1450	Joint, plug	1
(11)	UG.134	Joint, flywheel to torus cover	1
(12)	UE.1411	Bolt, torus cover	30



**FLYWHEEL**  
(Part Assembly RH.278)

Ref.	Part No.	Description	No off
(1)	RE.10694	Flywheel	1 — RC. cars
	RE.9984	Flywheel	1 — LC. cars
(2)	GB.5292	Disc, flexible	1
(3)	GB.4420 S/A	HOUSING, BEARING	1
(4)	RE.12055	Bearing	1
(5)	RE.18405	Bolt, flywheel	12
(6)	K.4010/Z	Nut, bolt	12
(7)	GB.5291	Plate, friction	1
(8)	RE.19479	Bolt, friction plate	3
(9)	K.4009/Z	Nut, bolt	3
(10)	RE.17589	CLUTCH COVER ASSEMBLY	1
(11)	RE.19480	Bolt, clutch cover	6
(12)	K.4509/Z	Washer, Bolt	6
(13)	K.4009/Z	Nut, bolt	6



**FLYWHEEL**  
(Part Assembly RH.279)